



LANGUAGE LINKS

Vol.4 No.9 November 27, 2006

Language Links is an internal publication of the Institute of Foreign Affairs, Office of the Permanent Secretary, Ministry of Foreign Affairs, 962 Krung Kasem Road, Bangkok 10100. <http://www.mfa.go.th>

What's happening this week?

For this week's excursion, we're taking you out on an English Camp, to be held at the Cha-Am Methavalai Hotel.

There will be a variety of English activities at the camp. We strongly encourage all the students to USE ENGLISH throughout the whole trip, not only while doing organized activities, but also when just chatting to each another. Most importantly, this is a good chance for all of you to join in activities with people from other classes. How does that sound?

We hope what you will get from this trip is not only a chance to practise English outside the classroom, but also an opportunity to gain knowledge in various areas.

We are looking forward to seeing all of you on this trip!

**TENTATIVE ITINERARY FOR ENGLISH CAMP
AT CHA-AM METHAVALAI HOTEL
CHA-AM, PETBURI
NOVEMBER 29-30, DECEMBER 1, 2006**



November 29, 2006

07.30 Leave the Institute of Foreign Affairs
11.00 Arrive at the Cha-Am Methavalai Hotel
12.00 Lunch
13.30 The Opening of the English Camp
13.45 English Activities
14.30 Coffee / Tea Break
15.00 English Activities (continued)
18.30 Dinner

December 1, 2006

9.00 English Rally
12.00 Lunch
13.30 Leave the Cha-Am Methavalai Hotel
18.00 Arrive at the Institute of Foreign Affairs

November 30, 2006

9.00 Group Production Activity
10.30 Coffee / Tea Break
10.45 Group Production Activity (continued)
12.00 Lunch
13.30 Group Production Activity (continued)
14.30 Coffee / Tea Break
15.00 Group Production Activity (continued)
18.30 Dinner



NOTE: *Casual dress is recommended

*Lots of facilities are available, e.g. swimming pools (swimming suit is needed), fitness centre, tennis court and karaoke room.

Usana

Culture Corner



TIPS for International Travelers



Very often, people who travel to the **United States** forget to tip.

It is usual to tip porters, taxi drivers and waiters.

Waiters expect to get a 15 percent tip on the cost of your meal. Taxi drivers expect about the same amount.



In England, make sure to stand in line ("queue") even if there are only two of you. It is important

to respect lines there. Additionally, it is a good idea to talk about the weather. It is a favorite subject of conversation

with the British.



In Spain, it is advisable to have a light snack in the afternoon if someone invites you for dinner.

People eat meals very late, and restaurants do not generally open until after 9 p.m.



In Arab countries, men kiss one another on the cheek. Your host may welcome you with a kiss on both cheeks. It is polite to do the same.

In Japan, be prepared to exchange personal or business cards. When a person gives you a card, do not put it into your pocket right away. The person expects you to read it and even to comment on it. It is impolite not to do so.

Santos, M.D. 2002. *Super Goal Student Books*.
Thai Watana Panich: McGraw Hill.

Here's the Answer...

Road and Street



Q What is the difference between a road and a street?

A A *street* is a road with houses on either side. We use *street* for roads **in towns**, but not for country roads.

Example:

Cars can park on both sides of our ***street***.



Road is used for both ***town and country***.

Example:

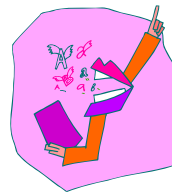
There's a narrow, winding ***road*** from our village to the next one.



Source: Swan, M. 2000. *Basic English Usage*.
Oxford: Oxford University Press. (Adapted)

LEARNING STRATEGIES

How to Learn English Pronunciation



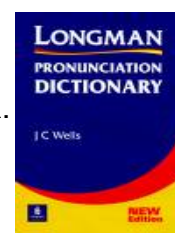
1. Learn the sounds of English

You have to know all the English sounds, so listen to how they sound in real words and sentences, and practise your pronunciation — listen to English words and sentences, and try to repeat them as well as you can by doing it regularly. It is a good idea to try to imitate English words whenever you're listening to anything in English (watching TV, watching a movie, etc.).

You will need at least some talent for imitating sounds (for instance, if you can imitate people in your own language, it should be easy for you to “do” English pronunciation). One helpful technique is to record your voice and compare it with the correct pronunciation. This way, you can see where your pronunciation is different from the original and you can gradually make it more native-like.

2. Learn the pronunciation of English words

You have to learn the pronunciation of every word that you're going to use. You can look them up in a dictionary and read about how they are pronounced. Dictionaries tell you about pronunciation through a special system called phonetic transcription. Phonetic transcriptions are written in a phonetic alphabet.



3. Choose American or British pronunciation (or both)

Different kinds of English have different pronunciation. You have a choice between British English and American English. Which one should you choose? Probably the kind that you like the most. Whether you choose British or American pronunciation, people will understand you wherever you go. You can learn to speak both kinds of English.



4. Learn about both American and British pronunciation

You may want to speak British English, but you will hear some American English, too. You may go see an American movie, visit the United States, have an American teacher, etc. You may want to speak only British English, but you need to understand both British and American English.

Adapted from www.antimoon.com

Adapted from <http://www.antimoon.com/>

Usana

FUN WITH ENGLISH

No.9 What is it part of?

Complete the following sentences by choosing an appropriate word from the ones on the right.
Look at the example first.

- | | | | |
|----|----------------------|-----------------------------|----------------|
| 1 | A stem is part of | <i>a flower</i> | a car |
| 2 | A trunk is part of | | a jug |
| 3 | A rung is part of | | a nut |
| 4 | A hand is part of | | a comb |
| 5 | A spoke is part of | | a ladder |
| 6 | A chassis is part of | | a shoe |
| 7 | A trigger is part of | | an apple |
| 8 | A core is part of | | a flower |
| 9 | A cuff is part of | | a book |
| 10 | A kernel is part of | | a gun |
| 11 | A yolk is part of | | a fountain pen |
| 12 | A bridge is part of | | a clock |
| 13 | A handle is part of | | a violin |
| 14 | A lens is part of | | a wheel |
| 15 | A leg is part of | | a candle |
| 16 | A wick is part of | | a tree |
| 17 | A nib is part of | | a camera |
| 18 | A heel is part of | | an egg |
| 19 | A tooth is part of | | a chair |
| 20 | A jacket is part of | | a shirt |

Answers no.8

- | | | |
|----|----------|----------|
| 1 | Honey | Money |
| 2 | hell | held |
| 3 | fat | flat |
| 4 | gin | gun |
| 5 | sank | sang |
| 6 | lifeboat | lifebelt |
| 7 | witch | watch |
| 8 | officers | offices |
| 9 | fat | fit |
| 10 | noses | roses |

EDITORIAL TEAM

Editor : Usana Wongnarkpet

Editorial Team : Suwanee Auephunsirikul
Napassawan Phromsumphun
Piyaporn Juntarat
Robert P. Cummins

Production : Raevadee Tantayavit