



- DISCOVERING THAILAND -
A MIDDLE EAST TRAVELER'S GUIDEBOOK

amazing
THAILAND


Thailand

Thailand boasts tourist destinations that are thoroughly enticing and cater to the preferences of avid travelers. In Bangkok, a city of contrasts, ancient temples and bustling markets coexist with modern museums and shopping havens. The city's vibrant atmosphere offers an endless array of activities and experiences. Venturing east, you'll find Pattaya, Rayong, and Trat, home to a scattering of islands big and small across the Gulf of Thailand. Pattaya, now a hub for trendy cafes and restaurants, offers a relaxing week of exploring new and unique hangout spots, each with its distinct vibe. Nearby, the serene beaches of Rayong and Trat remind you that breathtaking seaside escapes are just a stone's throw away.

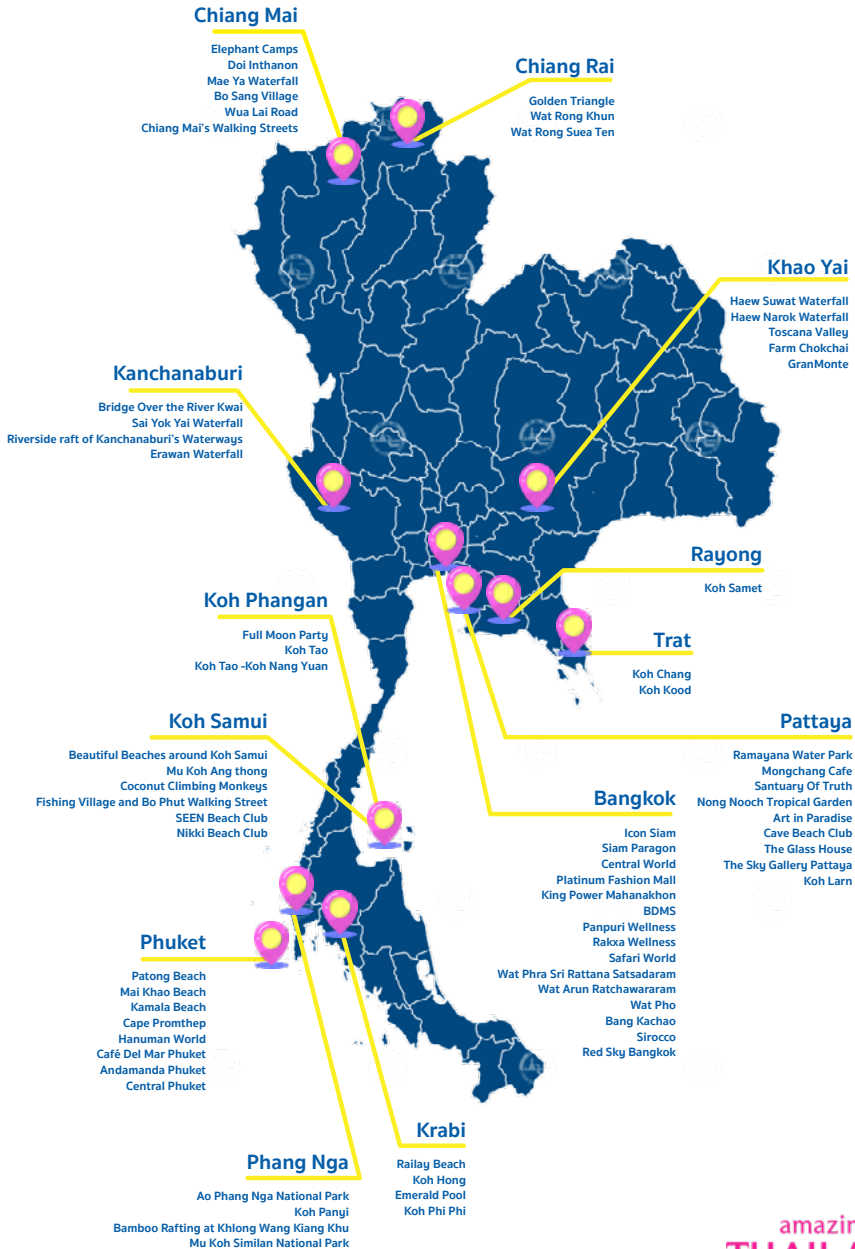
For those seeking the quintessential beach experience, head to Southern Thailand, where both the Andaman Sea and Gulf of Thailand coastlines await. Iconic destinations like Phuket, Phang Nga, Krabi, and Surat Thani boast world-renowned islands and picturesque beaches. Here, you'll find a perfect blend of natural beauty, cultural richness, and the unique lifestyle of the local communities.

Moving north to Chiang Mai and Chiang Rai, the scenic beauty of mountains and pristine nature will capture your heart. These regions offer a peaceful retreat with stunning landscapes and rich cultural heritage. Closer to Bangkok, Khao Yai and Kanchanaburi present themselves as unmissable highlights, boasting magnificent nature and historical significance, allowing travelers to trace the footsteps of Thailand's storied past.

This is Thailand, a place where exploring every region reveals why it's known as "Amazing Thailand." The diversity, beauty, and charm of this country ensure that your travels here will leave you with unforgettable memories and a longing to return.



Thailand



Bangkok

The Enchanting Capital City

Whether you fancy indulging in shopping, appreciating Thai art and architecture, or unwinding at a spa, everything you desire awaits you in Bangkok, the capital city of Thailand. This captivating city is considered one of the enchanting capitals of the world, attracting travelers from all over the globe who long to experience the magic of Bangkok at least once.

Bangkok boasts a blend of both ancient and modern attractions, harmoniously catering to everyone's preferences. On any given day, you can explore the historical and cultural richness in museums and temples like Wat Arun in the morning, indulge in a shopping spree at the city's premier malls in the afternoon, and then relax at a spa as the evening approaches. Finally, you can enjoy a luxurious dinner at one of many fine-dining restaurants available.

Formerly known as Bang Makok, Bangkok was established in 1782 after the completion of the Grand Palace. In 1785, the city witnessed the royal coronation ceremony, and it was officially named Krung Thep Maha Nakhon Amon Rattanakosin Mahinthara Yuthaya Mahadilok Phop nopparat Ratchathani Burirom Udomratchaniwet Mahasathan Amon Piman Awatan Sathit Sakkathattiya Witsanukam Prasit. In 1972, it was later changed to "Krung Thep Maha Nakhon" in the year 2515 of the Buddhist calendar"

Bangkok

amazing
THAILAND





Icon Siam

More Than a Shopping Mall

Typically, shopping malls may not be the preferred destination for avid travelers. However, Icon Siam defies that norm as it transcends the conventional concept of a shopping mall and certainly has become one of every traveler's bucket lists.

Here, everyone is invited to experience something beyond expectations, whether it's shopping, dining, lifestyle, or the arts, all meticulously curated and brought together in one place. Whether you fancy luxury brands, street art, or uniquely Thai crafted items, you can find it all here.

Beyond the shopping experience, Icon Siam boasts The ICONIC Multimedia Water Features and the longest indoor river dance show in Southeast Asia. Once you're here, you can also enjoy the breathtaking views of the Chao Phraya River from the remarkable River Park.

Don't forget to check in at the green area of ICONSIAM PARK. This not only serves as a venue for public art installations curated by the Bangkok Art and Culture Center but also features auspicious trees for your enjoyment. For those who love panoramic views, head to the rooftop of Icon Siam, where you can enjoy a 360-degree view along with delicious food.

All of this awaits you at Icon Siam.

Open daily 10.00 - 22.00 hrs.
For further details contact, Tel. 0 2495 7080
<https://www.iconsiam.com/th/>



Siam Paragon

The Epicenter of Urban Entertainment

If your aim is shopping and indulging in exciting activities in the heart of Bangkok, there is no place more suitable than Siam Paragon. It stands as a global shopping destination and the largest entertainment complex in Thailand, having evolved into a legendary and must visit spot for travelers.

Siam Paragon is the epicenter of modern living in Bangkok, seamlessly combining world class shopping, entertainment venues, tourist attractions, and a plethora of fine dining establishments. For those who revel in shopping for luxury brands, this is a paradise, as virtually every leading brand can be found here.

Families traveling together will find joyous activities for everyone at KIDZANIA BANGKOK, an educational and entertainment center designed for children aged 4 to 14. It provides a unique learning experience combined with enjoyable playtime. Moreover, Sea Life, an underwater world in the heart of Bangkok, offers an immersive experience. Those seeking encounters with iconic personalities can visit Madame Tussauds, the world-famous wax museum from England conveniently located here.

Siam Paragon encompasses every facet of entertainment in the heart of the city. With such an array of offerings, how could anyone afford to miss it?

Open daily 10.00 - 22.00 hrs.
For further details contact, Tel. 0 2610 8000
<https://www.siamparagon.co.th/>



Central World

Is a World-Class Landmark.

Another global landmark in Bangkok that captures the hearts of all travelers is Central World. The concept of being “Central to your world” aptly describes that this place is ready to curate the best for you to discover your identity and choose your own style with a vast array of products and services to meet your needs.

Whether you enjoy shopping, dining, or chilling, this place has got you covered in every aspect. Especially in terms of shopping, the experience is bound to be enjoyable with over 600 stores offering products from leading Thai and globally renowned brands for everyone to explore.

Moreover, for sports enthusiasts, there are sportswear, equipment, food, exercise venues, and a variety of sports activities to cater to the needs of those who truly love fitness and health. Food lovers will also be pleased because Central World is a significant Food Destination, presenting a multitude of top notch restaurants and numerous cafes for hangouts.

With a full-scale movie theater, largesized hotels, an ice skating rink, and extensive event spaces, Central World is not just a shopping mall but also a major entertainment destination. It stands as the largest countdown event venue in Bangkok, making Central World a social hub for you to celebrate life in your own way and explore new experiences through every encounter in the heart of the city.

Open daily 10.00 - 22.00 hrs.
For further details contact, Tel. 0 2640 7000
<https://www.centralworld.co.th/>





How can you bid farewell to Bangkok without experiencing the joy of shopping at Platinum Fashion Mall? This is the largest wholesale shopping center in Thailand, boasting over 2,000 stores selling clothing, shoes, bags, jewelry, and more.

Considered a shopping haven, Platinum Fashion Mall has everything you're looking for, catering to all genders and ages. A word of caution: if you find something you like, it's advisable to make the purchase on the spot. The sheer number of stores makes it challenging to revisit, so remember the store number or take the business card from the shop owner. Without these, you might struggle to locate the same store.

Beyond the extensive clothing and product selection, Platinum Fashion Mall also offers a plethora of dining options and cafes on the 6th-floor food court. Whether you're craving local or international cuisine, you'll find it here.

If shopping at Platinum Fashion Mall during the day doesn't satisfy your retail therapy needs, you can continue your nighttime shopping experience outside the mall. After closing hours, various activities take place in front of the mall, with numerous vendors selling clothing, jewelry, bags, and shoes. Sometimes, there are live music performances to enhance the nighttime ambiance.

If you're in Bangkok for a shopping spree, it's recommended to find accommodation near Platinum Fashion Mall for a more convenient and satisfying shopping experience.



Platinum Fashion Mall Thailand's Largest Wholesale Shopping Center

Open daily 09.00 - 20.00 hrs.
For further details contact, Tel. 0 2121 8000



King Power Mahanakhon

The Exquisite Concrete Jungle Viewpoint of Bangkok

If you are in search of one of the finest viewpoints in Bangkok, direct your gaze towards the King Power Mahanakhon. Here, you will be served with breathtaking views of the city at its best.

Soaring over 300 meters with a total of more than 78 floors, King Power Mahanakhon stands as one of the tallest buildings in Bangkok, and formerly, the tallest in Thailand. This mixed-use skyscraper encompasses hotel space, condominiums, retail outlets, an observation deck, and a glass-floored skywalk, allowing us to dine while enjoying the panoramic views atop the skyscraper. Whether you wish to savor a meal with the cityscape as your backdrop or simply ascend for a photo session, the choice is yours.

This architectural marvel reflects the audacity and vibrancy of one of the most diverse cities globally, Bangkok. It serves as a significant example of contemporary architecture and urban community design in Thailand, conceived by award-winning architects. King Power Mahanakhon rises above the concrete jungle of Bangkok to represent the lively essence of this metropolis, amidst the juxtaposition of historic and modern structures.

Discover the beauty of the concrete jungle in the capital of Thailand right from here.

Open daily 10.00 u. - 19.00 hrs.
Entrance fee: Adults 880 Baht ; Children 250 Baht ; Senior 250 Baht
For further details contact, Tel. 0 2677 8721
<https://kingpowermahanakhon.co.th>



Good Health Starts with BDMS



BDMS
Bangkok Dusit Medical Services

Bangkok is a city that caters to every convenience, offering not only comfortable accommodations, delicious cuisine, shopping, and entertainment but also high quality healthcare services. If you are interested in and prioritize your health, consider visiting Bangkok Hospital or BDMS, a leading healthcare facility in Thailand.

BDMS is renowned not only for its medical treatments but also for its expertise in every aspect of healthcare. Particularly, in the field of anti-aging sciences, BDMS has gained a notable reputation. They employ modern medical practices that focus on prevention and slowing down the aging process, utilizing advanced technologies for detailed health assessments.

BDMS believes that the key to good health begins with preventive and rehabilitative healthcare clinics. This marks a new dimension in healthcare, emphasizing preventive measures before illness strikes. BDMS Wellness Clinic is dedicated to combating age related diseases, addressing lifestyle issues, and managing stress to enhance overall well being.

Ensure that your visit to Thailand concludes with improved health by stopping by BDMS.

For further details contact, Tel. 0 2826 9999
<https://www.bdms.co.th/>

Panpuri Wellness

A Haven for Spa Enthusiasts

Thai spas are the epitome of relaxation, and for a truly luxurious experience, Panpuri Wellness is the place to be. Located in the heart of Bangkok, this is a paradise for spa and wellness lovers, offering a level of relaxation that goes beyond the ordinary.

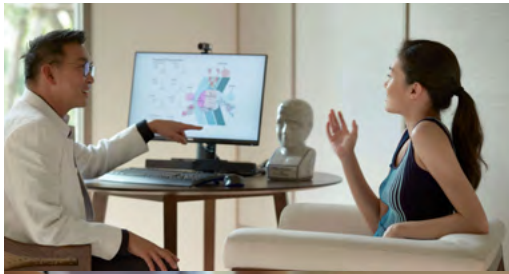
Panpuri Wellness is a sanctuary for both body and soul, providing a unique experience that transcends expectations. With over 15 years of expertise, it offers a luxurious escape with products that go beyond fragrances, helping you unwind and experience true relaxation.

With state of the art amenities, Panpuri Wellness allows you to rejuvenate your mind and revitalize your body through activities like organic spa treatments, health focused cuisine, and various wellness programs. The exceptional products, crafted from natural and organic ingredients, extend to skincare, body care, aromatherapy, and spa services, addressing issues such as insomnia, stress, fatigue, and environmental concerns.

Panpuri Wellness believes that true health encompasses both body and mind. Health and beauty are interconnected, and genuine beauty stems from internal well being. That's why your visit to Bangkok should include a stop at Panpuri Wellness to experience the epitome of health and beauty from within.

Open daily 10.00 - 22.00 hrs.
For further details contact, Tel. 0 2253 8899
<https://www.panpuri.com/wellness/>





Situated on over 200 acres of lush greenery by the tranquil Bang Kachao canal, the oasis of Bangkok, is Rakxa Wellness. It stands as the largest Fully Integrative Wellness & Medical Retreat in Southeast Asia, often referred to as a Wellness & Medical Hub. This comprehensive health center seamlessly integrates ancient traditions, modern practices, and alternative medicine to cater to everyone's aspirations for optimal well-being and strength.

Whether you prefer Thai herbal remedies, Ayurvedic acupuncture, the therapeutic sounds of the Singing Bowl, or various treatments like body and facial massages, yoga, acupuncture, hot stone therapy, Rakxa Wellness offers them all. The center focuses on nurturing the relationship between the body, mind, beliefs, and spirit to achieve a balanced state. With extensive studies in various health care disciplines, Rakxa Wellness provides over 200 treatment options.

Surrounded by diverse flora for physical and mental rejuvenation, you'll experience a soulful restoration through the untouched beauty of nature, the aromatic scent of blooming flowers carried by the breeze, and the lush greenery of Bang Kachao. It truly stands as a world-class wellness destination.

Visit Rakxa Wellness for a comprehensive health and mind care experience, and leave with the reward of a rejuvenated life.



Rakxa Wellness

Holistic Health and Mind Care

Open daily 24 hrs.
For further details contact, Tel. 0 2055 3100
<https://rakxawellness.com/>



Experience Africa in the Heart of Bangkok at Safari World

One corner of Bangkok promises an unexpectedly delightful adventure – Safari World, the kingdom of joy and a themed entertainment park that brings together over 50,000 animals from every corner of the globe.

Your journey begins in the vibrant and colorful Macaw Island, home to more than 200 parrots. Next, head to the Giraffe Terrace, where you can get up close and personal to feed these magnificent creatures. The Walrus, a member of the seal family and the first of its kind born in ASEAN, has also found its home at Safari World.

The Safari Park, an open zoo area, is a thrilling experience with a diverse array of animals, including lions, zebras, giraffes, rhinos, impalas, hippos, African buffaloes, and more. It's like having a piece of Africa right here.

However, the highlight is the up close feeding session with the Bengal tigers. There's also the entertaining dolphin show and the River Safari boat ride, taking you on a journey through different tribal villages and lifelike wild animals.

If you're looking for an all-encompassing, fun-filled activity in Bangkok and have a full day to spare, Safari World is the perfect destination for everyone, regardless of age or gender.

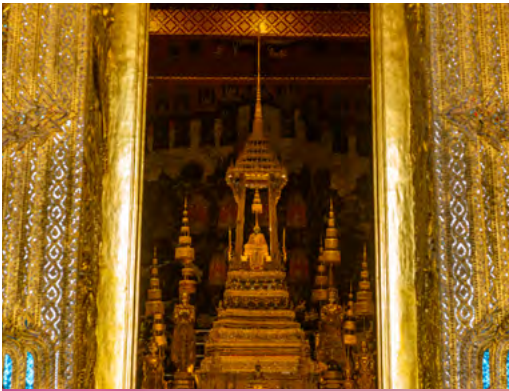
Open daily 09.00 - 17.00 hrs.
Entrance fee : Tickets to enter only two sections:
Adults: 750 baht and children: 650 baht;
Tickets for the Marine Park:
Adults: 600 baht and children: 500 baht;
tickets for the Safari Park:
Adults: 450 baht and children: 350 baht.

In case of visiting the Safari Park by private car, there is no additional charge. If using the safari coach service, there is an additional charge of 60 baht/person.
For further details contact, Tel. 0 2518 1000



Wat Phra Sri Rattana Satsadaram

Thailand's Iconic Temple



Bangkok boasts over 300 temples, but the one no tourist should miss is Wat Phra Sri Rattana Satsadaram, also known as Wat Phra Kaew. This temple, considered the most significant and revered in Thailand, is the spiritual heart of the nation and was constructed as part of the establishment of Rattanakosin Kingdom in the year 1782.

Following the tradition of constructing the royal temples within the precincts of the Grand Palace, as seen with Wat Mahathat in the Sukhothai era Grand Palace and Wat Phra Si Sanphet in the Ayutthaya era Grand Palace, Wat Phra Kaew is an architectural marvel. Inside the temple, historical treasures abound, including the iconic Emerald Buddha, surrounded by a gilded wall, exquisite architecture, and intricately detailed structures like the golden stupa. The inner walls depict mural paintings narrating Buddhist stories, depicting scenes from the life of Buddha, Sukhothai style celestial beings, and the Ramakian epic.

The main highlight is the Phra Phuttha Maha Mani Rattana Patimakon, or the Emerald Buddha, representing the spiritual nucleus of Thailand. Additionally, the Phra Sri Rattana Chedi, a bell-shaped stupa built in 2398 BE (1855 CE), was established by King Rama IV to enshrine relics obtained from Sri Lanka.

If there's one temple not to be missed in Bangkok, it's undoubtedly Wat Phra Kaew.

Open daily 08.30 - 15.30 hrs.

Entrance fee : 500 baht.

For further details contact, Tel. 0 2623 5499

<https://www.royalgrandpalace.th/>

Wat Arun

Ratchawararam

The Graceful Temple on the Banks of the Chao Phraya River

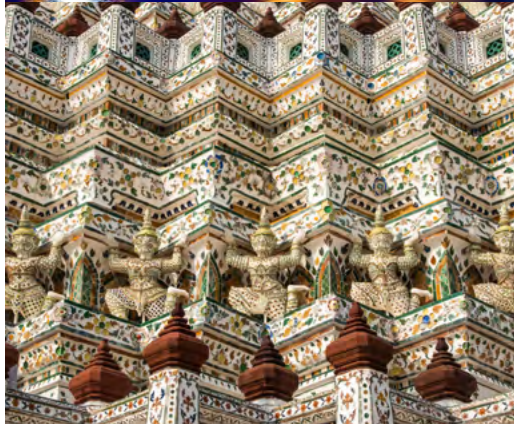
In addition to Wat Phra Kaew, another highly esteemed temple that shouldn't be overlooked in Thailand is Wat Arun Ratchawararam, also known as Wat Chaeng. Originally named Wat Makok Nok, it was later renamed by King Rama II as Wat Chaeng, signifying the time of his arrival at the temple during dawn.

The main highlight of this temple is the central prang, or pagoda, of Wat Arun. It stands prominently along the banks of the Chao Phraya River. The prang you see today underwent significant renovation during the reign of King Rama III when the entire temple complex was reconstructed.

The central prang consists of three main parts: the base, the prang body, and the prang's pinnacle. The group of satellite prangs includes the principal prang and four subsidiary prangs. Inside the temple grounds, there is also the old ubosot containing the revered Phra Buddha image cast in the likeness of King Rama II. However, the most popular spot for tourists to take photos is the Yak Wat Chaeng, the giant guardian figures standing on both sides of the gate with clenched fists. The two figures, named Sahatsadecha (white) and Thotsakan (green), are sculpted from plaster and adorned with decorative ceramic tiles.

Wat Arun is also known for its extensive collection of Chinese stone figurines found throughout the temple grounds, especially along the pathways and around the prang terrace. During the serene sunset, crossing the Chao Phraya River to the opposite bank from Wat Arun offers a breathtaking view of the temple in its full nighttime splendor

Open daily 08.00 - 18.00 hrs.
Entrance fee : 100 baht.
For further details contact, Tel. 0 2891 2185





Wat Pho or Wat Phra Chetupon Wimonmangkalaram Ratchaworamahawihan, is one of the significant landmarks in Bangkok, Thailand. This temple not only stands as a valuable cultural heritage for Thailand but is also globally recognized as an essential site.

Wat Pho has been acknowledged by UNESCO as a 'Memory of the World' for the Pho Inscription, which encompasses Thai wisdom and various branches of traditional knowledge. The origin of Thai traditional massage can be traced back to Wat Pho, making it a cultural heritage recognized by humanity.

Beyond its cultural significance, Wat Pho serves as a center for various sciences and arts. The temple's beautiful architecture attracts visitors from around the world.

A must-see highlight at Wat Pho is the 'Reclining Buddha' a symbol of the temple's magnificence and an iconic representation of Amazing Thailand. The Reclining Buddha is the largest of its kind in Bangkok and the third largest in Thailand. Its enormous size required the construction of the Buddha figure before building the hall to encase it.

Wat Pho is also known as the 'Temple of the Reclining Buddha' and boasts 99 chedis, contributing to its reputation as a stupa-filled temple. Don't miss the search for the two 'Yak Wat Pho' giants guarding the entrance gate.

This temple is undoubtedly a precious heritage to behold when visiting Bangkok.



Wat Pho

Thailand's Precious Heritage

Open daily 08.00 - 18.30 hrs.
Entrance fee : 100 baht.
For further details contact, Tel. 0 2226 0335



Bang Kachao

The Green Lung of the Capital

Located in the southern part of Bangkok, connecting to Samut Prakan province, is 'Bang Kachao' an area known as the green lung near the bend of the Chao Phraya River, boasting abundant natural beauty. It has earned the reputation of being the 'lung' of the capital and holds significance for its environmental importance. In 2006, Time Magazine recognized Bang Kachao as 'The Best Urban Oasis of Asia' elevating its profile both locally and internationally.

This large green area near the city is vital for its environmental impact. It features the Si Nakhon Khuean Khan Park, a vast public park filled with diverse plant species. Visitors can rent bicycles to explore the scenic landscapes of the forest and river up close.

Bang Kachao offers more than just lush greenery; it is home to various attractions. The Bang Namphueng Floating Market, open on weekends, is a popular spot for weekend tourists seeking delicious local treats. Other interesting places include the Thup Thim Homestay, the Thai Catfish Museum, the Mon Village of Klong Bang Luang, and several Wats (temples) such as Wat Bang Nam Phueng Nok, Wat Bang Nam Phueng Nai, and Wat Bang Khae.

If you are someone who enjoys seeking out shaded and delightful corners, Bang Kachao might be the perfect destination for you”

Open daily 06.00 - 19.00 hrs.
For further details contact, Tel. 0 2461 3254



Sirocco

A Night of Extraordinary Elegance



If you're seeking a restaurant with an exceptionally romantic atmosphere, perfect for dinner with your loved one amidst the breathtaking views of Bangkok, Sirocco is the ultimate choice.

Sirocco is a luxurious bar and restaurant, another gem in the crown of Bangkok. The spectacular views encompassing the towering skyline and the mesmerizing Chao Phraya River make this venue truly outstanding. Situated on the 63rd floor of Lebua Hotel, it stands out with two main sections: The Dome and the renowned Sky Bar.

Apart from an extensive selection of delightful beverages, Sirocco boasts an extensive menu of exquisite dishes. Signature dishes such as the imported Lamb Rack, expertly seasoned and grilled to perfection, offer a tantalizing culinary experience.

One standout from the seafood menu is the Stir-Fried Crab with Black Pepper, a dish renowned for its bold and distinctive flavors. Additionally, the Grilled Wagyu Beef is a culinary masterpiece that captures the hearts of those fortunate enough to savor its exquisite taste.

Whether it's a special occasion or just an evening to experience the finer side of Bangkok, Sirocco is sure to craft a night of unforgettable impressions for you.

Open daily 18.00 - 00.00 hrs.
For further details contact, Tel. 0 2624 9555

Red Sky Bangkok

Is a must try experience in life

Currently, rooftop bars are trending, each with its own uniqueness, special features, or distinctive decor. One rooftop bar that many people rave about, claiming to be impressive every time you visit, is Red Sky. Located atop the Centara Grand, Red Sky is considered one of the top rooftop bars in Bangkok, offering stunning views of the city. Situated in the heart of the city, it is easily accessible on the 55th floor of the Centara Grand At Central World hotel.

To reach Red Sky, take the elevator from the hotel lobby to the 23rd floor, then switch to another elevator for the High Zone, taking you up to the 55th floor. The restaurant is modernly decorated with red, brown, and white tones, creating a contemporary atmosphere. The spacious outdoor area is perfect for enjoying excellent panoramic views. Don't miss the chance to appreciate the 360-degree view, and capture a photo with the iconic lotus-like symbol in the background.

This place is undoubtedly a landmark that rooftop bar enthusiasts should experience at least once in their lives. Whether it's the breathtaking 360-degree views, the luxurious ambiance created by the restaurant's decor, or the exquisite flavors meticulously crafted by the chefs, Red Sky is a remarkable destination for those seeking a rooftop bar adventure.

Open daily 18.00 - 23.00 hrs.
For further details contact, Tel. 0 2541 1234



Bangkok

Recommended Restaurants



MICHELIN®

Chef's Table Bangkok
Le Normandie by Alain
Roux
Mezzaluna Restaurant
R.HAAN
Sorn
Sühring



MICHELIN®

80/20bkk	Sra Bua by Kiin Kiin
Blue by Alain Ducasse	Suanthip
Cadence Restaurant by Dan Bark	Sushi Masato
Canvas	PRU Restaurant
Chim By Siam Wisdom	Savelberg Thailand
Elements, Inspired by Ciel Bleu	Yu Ting Yuan
J'AIME by Jean-Michel Lorain	IGNIV Bangkok
Khao (Ekkamai)	Côte by Mauro Colagreco
Jay Fai Pratu Phee	Gaa
Le Du	Aksorn
Methavalai Sorndaeng	Signature
Nahm	Baan Tapa
Paste Bangkok Thai Cuisine	Haoma
Saneh Jaan	Potong
Maison Dunand	



Pattaya

Paradise near the Capital

If you're in search of a seaside retreat near Bangkok with an abundance of exciting activities and a vibrant atmosphere, look no further than Pattaya. This renowned coastal city in Chonburi province, just about 150 kilometers from Bangkok, offers a convenient and easily accessible travel destination.

Pattaya is a tourist haven, boasting a plethora of attractions both on land and at sea. The city offers various activities, including bungee jumping, ziplining, go-karting, paintball, and jet-skiing. Whatever your preference, Pattaya has it all.

Beyond the thrill seeking adventures, there are beautiful gardens, museums, water parks, and family friendly attractions to ensure a delightful experience for every member of the family. Each year, Pattaya introduces new tourist spots, cafes, and restaurants, creating an ever evolving landscape.

As night falls, Pattaya transforms into a city that never sleeps. It's a city of lights and colors, with not only beaches suitable for water activities but also a hub of entertainment, hotels, accommodations, restaurants, and souvenir shops. Pattaya has everything you need for an unforgettable experience.

Embark on a journey to Pattaya, breathe in the sea breeze, and you'll realize that paradise is closer than you think.

Pattaya

amazing
THAILAND





Pattaya stands out not only for its captivating beaches and entertainment but also home to Thailand's largest water park – the Ramayana Water Park. This aquatic wonderland offers a plethora of exhilarating rides and a multitude of fascinating activities, making it a world class destination surrounded by the sea, ocean waves, and 21 thrilling slides.

Ramayana Water Park boasts the title of being one of the largest water parks globally, covering an expansive area of over 100 acres. With an impressive array of over 50 different rides to choose from, it secures its place as the 12th largest water park globally, the 2nd in Southeast Asia, and the top ranking park in Thailand. Notably, it has earned the prestigious TripAdvisor Travelers' Choice Awards, claiming the 1st spot in Asia and ranking 10th globally among the best water parks.

This water park caters to visitors of all ages, making it an ideal destination for families. Nestled amidst picturesque green hills and natural lakes, it provides an enchanting setting for families to enjoy quality time together.

What sets Ramayana Water Park apart is its unique theme inspired by the epic Ramayana, bringing to life the ancient city's lost architecture and murals. The park beautifully replicates the ancient walls and artifacts that remain today.

If you have the opportunity to visit Pattaya, bring your family to experience the unparalleled wonder of Ramayana Water Park – Pattaya's version of an impressive water adventure!



Ramayana Water Park Thailand's Ultimate Water Wonderland in Pattaya

Open daily 10.00 - 18.00 hrs.
Entrance fee : Adults 1,190 Baht; Children 890 Baht. Senior 590 Baht.
For further details contact, Tel. 0 3300 5929
<https://www.ramayana-waterpark.co.th/>

Mongchang Cafe

A Must-Visit for Elephant Enthusiasts in Pattaya

In the midst of Pattaya's bustling and ever evolving landscape, there's a new landmark that captures the essence of the city's charm Mongchang Cafe. This café promises to take everyone on a delightful journey to experience the adorable and friendly nature of elephants. Bringing your little ones along is highly encouraged, as it adds a whole new dimension to witnessing elephants in Pattaya.

Mongchang Cafe sets itself apart by making elephants the focal point, surrounded by the stunning beauty of nature. With a river flowing through the middle, you can observe elephants strolling around. Visitors have the unique opportunity to ride, play, or even bathe elephants all while supporting these animals by purchasing their food.

This café strikes a perfect balance between a coffee shop, café, and a mini zoo. Beyond the myriad of knowledgeable elephants, there are other animals awaiting tourists, including gibbons, birds, tortoises, and water buffaloes. Standout activities include taking photos with elephants, feeding them, and enjoying an elephant ride into the water, providing an experience reminiscent of an open zoo.

Considered a novel experience for many, Mongchang Cafe not only offers breathtaking views and a variety of activities but also immerses visitors in the serene beauty of nature. Whether it's riding elephants to appreciate the natural surroundings, venturing into the authentic jungles of Pattaya, enjoying a fantasy cabaret show in the café, or gaining insights from animal and elephant shows, there's something for everyone here.

All these experiences await you and your family at Mongchang Cafe.

Open daily 10.00 - 19.00 hrs.
Entrance fee : 300 baht.
For further details contact, Tel. 06 5692 4291



Sanctuary Of Truth

A Coastal Gem in Pattaya

One of the captivating spots in Pattaya that will leave everyone in awe is the Sanctuary Of Truth, a magnificent and intricate wooden structure situated along the shores of Pattaya. This architectural marvel narrates the tales of religion, philosophy, and the rich cultural heritage of East Asia, reflecting moral virtues, cultural traditions, and spiritual duties of ancient times through various deities.

The entire structure of Sanctuary Of Truth is constructed entirely from wood, with even the locks connecting each intricately carved piece utilizing traditional Thai woodworking techniques, such as carving, mortise and tenon joints, and Thai style dovetails. The craftsmanship showcases the meticulous attention to detail reminiscent of ancient times.

Ascending the staircase leading to the interior of the temple, one is greeted by breathtaking carvings from various wood types, including teak, padauk, and makha. Sanctuary Of Truth remains an ongoing masterpiece, continuously constructed, renovated, and expanded over several years. Being made of wood and located by the sea, the artwork is susceptible to erosion caused by sea salt. Therefore, besides creating new pieces, the temple requires constant restoration and maintenance of existing carvings.

Stepping inside the Sanctuary Of Truth reveals an astonishing display of woodcarvings and virtuoso craftsmanship at every turn. At the heart of the temple lies a grand hall housing the revered Buddha relics, surrounded by exquisite wooden sculptures symbolizing the four elements – earth, water, air, and fire – as per the beliefs of Buddhism and Hinduism.

The true value of this site unfolds along the shores of Pattaya, making Sanctuary Of Truth a priceless coastal treasure.

Open daily 08.00 – 18.00 hrs.

Entrance fee: Adults 500 Baht; Children 250 Baht.

For further details contact, Tel. 0 3811 0653-4, 0 3811 0626-8
<https://www.sanctuaryoftruthmuseum.com/>



Nong Nooch

Tropical Garden

A Spectacular Botanical Oasis

For nature enthusiasts visiting Pattaya, a must visit destination is the Nong Nooch Tropical Garden, the largest relaxation haven in the Eastern region. This sprawling sanctuary boasts vibrant flower gardens, a spectacular orchid garden, a bonsai garden, and a botanical garden all designed with the philosophy of creating a haven for travelers.

The garden offers a plethora of activities to cater to visitors, including various boat rentals for paddling in the ponds, a diverse array of animals to admire, and a Thai cultural exhibition center. This center showcases traditional Thai folk dances, martial arts demonstrations, indigenous sports, and even an elephant show.

Divided into different zones, Nong Nooch Tropical Garden features the Dinosaur Valley zone, where visitors can interact with lifelike ancient creatures, numbering over 70 species and more than 200 replicas. The Beautiful Garden Zone comprises over 20 themed gardens showcasing an impressive collection of over 10,000 plant species. The Mini Zoo Zone introduces an assortment of adorable animals of various breeds. The Lakeside Villa Zone, with its expansive lake and tranquil ambiance, provides a refreshing retreat. Lastly, the Nong Nooch Theatre Zone boasts a grand theater accommodating approximately 2,000 seats, hosting cultural performances representing the four regions of Thailand.

A standout feature of Nong Nooch Tropical Garden is the French Garden, inspired by the geometrically designed gardens behind the Versailles Palace. Additionally, the Stonehenge Garden creatively arranges rectangular stones resembling those found at Stonehenge.

In essence, if you appreciate the serenity of beautifully landscaped gardens, Nong Nooch Tropical Garden is sure to keep you happily engaged and content.

Open daily 08.00 – 18.00 hrs.

Entrance fee: Adults 150 Baht; Children Free

For further details contact, Tel. 0 3823 8061-63, 08 7488 0028, 06 1647 7088

<https://www.nongnoochpattaya.com/th/>





Explore the enchanting world of Pattaya through the captivating illusions at “Art in Paradise” the first and largest 3D art museum in Thailand. This interactive art museum encourages visitors to actively engage with the artwork, creating a sense of fun and participation.

Each artwork showcases the incredible ability to create mind bending 3D paintings, making them appear lifelike and interactive. The 3D paintings exhibited at Art in Paradise draw inspiration from French artists, but the Thai rendition distinguishes itself by its larger scale and diverse storytelling.

Featuring over 150 optical illusion paintings, Art in Paradise is divided into 12 zones, each presenting a unique theme. Dive into the underwater wonders of the Aqua Zone, embark on a safari adventure in the Safari Zone, appreciate classic art in the Classic Art Zone A&B, explore civilization in the Civilization Zone, journey to ancient Egypt in the Egypt Zone, embrace Thai traditions in the Thai Tradition Zone, step into fantasy realms in the Fantasy Zone, encounter famous personalities in the Personage Zone, feel the love in the Lover’s Zone, play with toys in the Toy Zone, and marvel at miniature dioramas in the Diorama Zone.

The museum promises not only a visual feast of beautiful paintings but also an enjoyable experience of posing creatively to merge seamlessly with the three dimensional artwork. Whether you come with friends or family, Art in Paradise guarantees smiles and happiness that will stay with you.



Experience Joy with Optical Illusions at Art in Paradise

Open on Saturdays and Sundays between 09.30 – 17.00 hrs.
(tickets on sale until 16.00 hrs.)
Entrance fee: Adults 400 Baht ; Children 200 Baht.
For further details contact, Tel. 0 3842 4500, 08 5999 3374, 08 5999 4467



Chill Out at the Cave Beach Club in Pattaya

If you're in Pattaya and on the hunt for a hip and cool café, look no further than the Cave Beach Club. This café and beach club by the sea feels like your private seaside retreat. Styled with a blend of Balinese and Hawaiian influences, the ambiance is relaxed, comfortable, and perfect for unwinding. The spacious area provides numerous picture perfect spots for your non stop social media updates.

Cave Beach Club has transformed the cafe scene in Pattaya with its club like atmosphere. The color scheme of brown, white, and blue adds a clean and refreshing touch, making it currently the most beautiful café in Pattaya.

Enjoy the laid back and chill atmosphere as you feel the sea breeze, listen to the sound of the waves, and appreciate the stylish décor that is unique to this venue. Upon entering, everyone is captivated by the interior design, and the café is divided into two zones: an air conditioned area and an outdoor zone right by the sea, offering a relaxing coastal experience.

What's more, indulge in a diverse selection of food, including Thai and international dishes, along with hot and cold beverages, snacks, and cakes, all made with carefully selected ingredients.

Whether you're hanging out on a lazy day, partying with friends, or seeking a tranquil retreat after a day on the islands, Cave Beach Club is the perfect spot for everyone.

Open daily 11.00 – 24.00 hrs.
For further details contact, Tel. 08 3825 8283



Dine on the Beach at The Glass House A High Class Invitation to Travelers



For those craving a romantic beachside dining experience in Pattaya, 'The Glass House' is the place to be. Located along the shores of Pattaya Beach, this enchanting venue is perfect for special moments with special people. Coupled with a delightful menu offering a variety of dishes and a plethora of beverages, it promises a truly relaxing and enjoyable atmosphere.



Here, you'll savor premium seafood crafted from fresh, local ingredients. The diverse menu includes both traditional seafood dishes and exquisite international cuisine. Guests can enjoy their meals in the original open air setting, feeling the sea breeze, or opt for the indoor area if the weather takes a turn.



Imagine lounging on the beach, embracing the close to nature ambiance, and chilling with the sea breeze while relishing delicious meals from the restaurant. For those who love private, intimate dinners, the venue offers exclusive zones. Photography enthusiasts will fall in love with the meticulously designed space, adorned with wood tones and cream colors that complement the beachside setting.



The Glass House provides a cozy and visually pleasing atmosphere with its clean and comfortable white cream color scheme. The decor creates a relaxed and soothing environment, enhanced by the breathtaking views. If you're looking to capture magical moments, this place is a photographer's dream, with its stylish design, wood tones, and cream colors blending seamlessly with the beach backdrop.

Especially during sunset, The Glass House transforms into a prime time spot, enhanced by beautiful lighting arrangements. For couples, families, or groups of friends, it guarantees a memorable experience. Besides the extensive food menu, there's a beverage bar for those seeking a laid-back atmosphere and refreshing sea breeze.

The Glass House is another gem in Pattaya that ensures everyone leaves with a smile on their face.

Open daily 11.00 – 24.00 hrs.
For further details contact, Tel. 0 3825 5922, 08 1266 6110

Savor the View and Culinary Delights at The Sky Gallery Pattaya

For those who love to explore beautiful places in Pattaya, 'The Sky Gallery Pattaya' is a must visit. Nestled along the high cliffs by the sea, the ambiance offers a panoramic view of the Pratumnak Hill, with the added allure of witnessing a breathtaking 180-degree sunset.

The charm extends beyond the scenic setting; the restaurant boasts an extensive menu with over 100 items, ranging from authentic Thai dishes to international cuisine, delectable desserts, and a variety of beverages.

Social media enthusiasts will be delighted with numerous picturesque corners, especially the 'Sky Walk' a spot that guarantees stunning photos. The venue provides a cozy atmosphere amidst treetops and elevated views of both mountains and sea simultaneously, creating a unique experience. Revel in the romantic and warm ambiance as you enjoy the vast seating options, both indoors and outdoors, catering to diverse preferences.

Explore the various zones, each designed to fulfill different desires and preferences. Whether you choose indoor seating or the standout outdoor zones that seamlessly connect you with the sea and sky, every seat is crafted to offer an exceptional experience.

Marvel at the 360 degree romantic sunset and Pattaya seascape from the signature 'Bird's Nest' zone, a truly enchanting space designed for those special moments.

If you seek an exquisite dining experience paired with breathtaking views, 'The Sky Gallery Pattaya' is the perfect choice.

Open daily 10.00 – 22.00 hrs.
For further details contact, Tel. 09 2821 8588





When you're in Pattaya, don't miss the chance to take a boat ride to Koh Larn an island known for its pristine white sand beaches and crystal clear azure waters that rival those in southern Thailand. Koh Larn is located just 7 kilometers off the coast of Pattaya and offers numerous beautiful beaches with a variety of water activities.

Visiting Koh Larn can be a day trip or an overnight stay, and the island provides a wide range of accommodation options to suit different budgets and preferences.

One of the most popular spots on Koh Larn is the 'Tawaen Beach' featuring clear blue waters and a spacious white sandy beach. It stretches longer than any other beach on the island, lined with shops and restaurants, creating a vibrant atmosphere. The beach also offers water activities such as parasailing, jet skiing, and scootering.

For those seeking tranquility, 'Samae Beach' is recommended. Adjacent to Tawaen Beach, it is connected by a charming white wooden bridge from the pier. This beach boasts calm and crystal clear waters, along with fine sandy shores. The area also features a viewpoint on Monkey Mountain, providing a stunning 360 degree panoramic view of the bay.

A mere 15 minute speedboat ride from Pattaya takes you to Koh Larn, revealing a mesmerizing seascape that feels worlds away from the bustling city. Experience the beauty of Koh Larn's turquoise waters, making it hard to believe its proximity to Pattaya.



Explore
Koh Larn
the Popular Island near Pattaya

Pattaya



Taste fruit and visit the island in Rayong

Rayong offers more than just clear seas and beautiful beaches. It is a natural wonderland with lush jungles, waterfalls, and a plethora of options for relaxation. What sets Rayong apart is its exquisite fresh seafood sourced directly from the Gulf of Thailand and its renowned fruit buffets featuring a variety of delectable options. Best of all, Rayong is conveniently close to Bangkok, making it a must visit destination.

Stretching approximately 100 kilometers along the coastline, Rayong features a diverse landscape of plains, hills, and mountains. The province is a melting pot of various local fishing communities, with over 49 fishing groups spread across its numerous beaches. The traditional villages maintain their charm, and the region is dotted with fruit orchards boasting a wide array of high quality fruits. Rayong has positioned itself as a significant agricultural tourism destination, and its coastal areas are undergoing continuous development.

When you have the opportunity to explore the coastal city, be sure to savor the freshness of the seafood directly sourced from local fishing boats. After indulging in the seafood delights, embark on a fruit tasting adventure in the orchards. Rayong, renowned for its orchards, offers a variety of fruits, with durian being the king. Other fruits like mangosteen, rambutan, salak, and longkong await you in the form of delightful buffets. It's a unique experience to enjoy a diverse array of fresh fruits in a buffet setting.

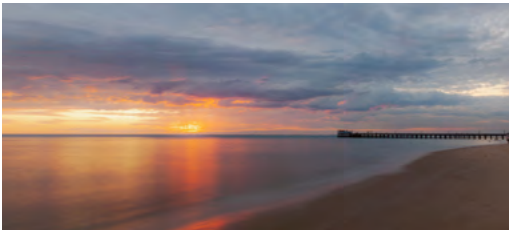
Don't forget to visit the Sunthorn Phu Monument, featuring a striking statue of the poet playing a flute, surrounded by enchanting mermaids and giantess. Drive just an hour from Pattaya, and you'll find yourself immersed in the wonders of Rayong.



Rayong
amazing
THAILAND

Koh Samet

Rayong's Hottest Spot



While Rayong has an abundance of attractions, Koh Samet stands out as its hottest spot. This small but stunning island, with its clear waters and white sandy beaches, is a favorite among international tourists seeking relaxation. What sets it apart is the availability of excellent accommodations ready to cater to the needs of travelers.

Situated approximately 6.5 kilometers from the mainland, Koh Samet is easily accessible, taking less than half an hour by boat. Most of the island's beaches are on the eastern side, with the most renowned being the Sai Kaew Beach.

If you visit Koh Samet and miss stepping onto the fine sands of Sai Kaew Beach, it's as if you haven't truly experienced the island. This beach, with its finely detailed white sand stretching 800 meters, is the most beautiful on Koh Samet. It's the epitome of a popular beach, hosting a myriad of activities throughout the day and offering lively entertainment in the evenings along the coastline. This corner of Koh Samet never sleeps, ensuring continuous fun and excitement.

The crescent shaped Ao Wong Duan and the Moon shaped Bay are other highlights. These pristine, roughly 500 meter long beaches boast clean white sands and offer various facilities, including restaurants, bars, and accommodations. The most captivating feature is the breathtaking sunset view, making it the perfect spot to witness the sun setting over the horizon.

Another highlight of Koh Samet is Ao Prao, a beautiful sandy beach on the west side of the island. Here, the tranquil atmosphere and clear blue waters create an idyllic setting for both relaxation and engaging in various water activities.

A 3 days 2 nights stay is ideal for an introduction to Koh Samet, but if time permits, a longer stay will undoubtedly make you fall in love with this enchanting island.



Rayong





Trat
amazing
THAILAND

Explore the Eastern Paradise Trat

If your travels in Thailand have so far been limited to Pattaya or Rayong, I suggest you change your destination for a truly captivating experience. Redirect your gaze towards the archipelago of Trat in the eastern part of Thailand, and you'll discover that the slightly extended journey is undeniably worth it.

Trat, situated 315 kilometers from Bangkok, is a border province in the eastern region of Thailand. The name "Trat" is believed to have originated from the word "graad" a type of tree used to make brooms, which was abundant in the area in the past.

Trat has historically been a seaport town, well suited for ships to anchor for trade and exchange of goods. It served as a trading hub and settlement for Chinese communities who ventured here for commerce.

Today, Trat is renowned for its complete range of tourist attractions, from the beauty of its small and large islands to its distinctive features. The province offers everything, including the charm of Koh Chang, an array of local foods, seasonal fruits, museums, and insights into the lifestyle and culture of its communities.

Embark on a journey to Trat, delve into its history at the classic museum, explore ancient temples dating back to the Ayutthaya period, and then take a boat to visit the islands. This entire route forms an intriguing tourist path in Trat that will undoubtedly deepen your understanding of this captivating province.

Koh Chang

Thailand's Second Largest Island



Among the numerous small and large islands in the province of Trat, each with its own unique charm, Koh Chang stands out as the second largest island in the country, second only to Phuket. Koh Chang's popularity is well deserved, offering pristine beaches, crystal clear waters, and a diverse marine life due to its distance from large river mouths, minimizing sedimentation.

The island is surrounded by clean, white sandy beaches, lush coconut groves, and forests, creating an idyllic setting. Upon reaching Koh Chang, the first thing to do is exploring its beautiful beaches, including the expansive White Sand Beach, backed by coconut palms and lush greenery. Other notable beaches include Klong Prao Beach and Kai Bae Beach, each with its own unique characteristics.

After enjoying the beachscapes, gear up for a visit to the island's enchanting waterfalls. Koh Chang boasts two notable waterfalls, namely Than Mayom Waterfall and Klong Plu Waterfall, both showcasing the island's natural beauty and offering a refreshing escape.

Don't forget to explore the historical significance of Koh Chang by visiting the Navy Memorial at Ao Salak Phet, commemorating the Thai-French naval battle over territorial disputes in 1941. Immerse yourself in the local way of life at this bay, and you'll surely be captivated by the charm of Koh Chang, an experience not to be forgotten.

Getting there: There are two main piers with boats running to and from the island
Open daily 07.00 – 18.00 hrs. (Center Point Pier)
For further details contact, Tel. 08 6304 2726
Open daily 06.45 – 18.30 hrs.
(Ao Thammachat Pier, Boats leave every hour on the hour)
For further details contact, Tel. 08 1943 5872

Natural Splendor on Koh Kood

Among the myriad of small islands in the Trat province's archipelago, none can rival the natural beauty and purity found on Koh Kood. Positioned as the last island in the Trat sea, Koh Kood retains the utmost beauty and untouched natural magnificence.

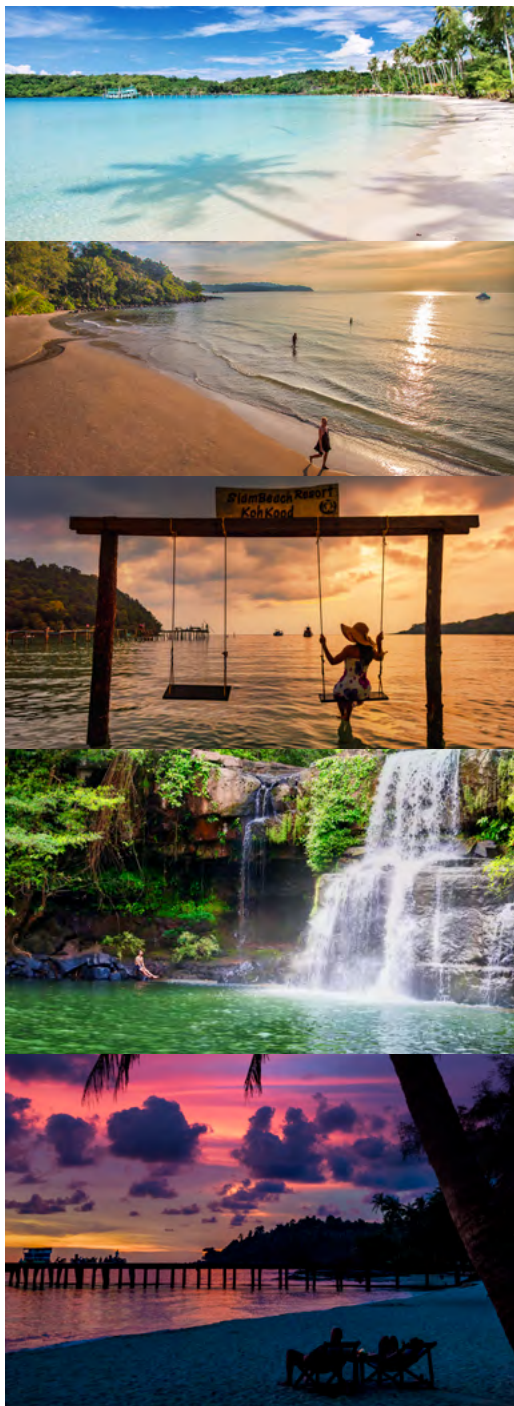
Koh Kood boasts multiple beautiful sandy beaches, and if you choose to stay on the west coast of the island, you'll experience breathtaking sunsets rivaling those of other popular tourist destinations. Ao Ta Pao, with its long stretch of clear white sands and coconut palm lined shores, creates a serene atmosphere.

Next is Klong Chao Beach, another picturesque sandy stretch. From here, a 4.5 kilometers hiking trail leads to the enchanting Klong Chao Waterfall. Alternatively, you can take a 10 minutes long tail boat ride followed by a 1 kilometer walk to reach the waterfall.

On the eastern side, tourists have the opportunity to witness mesmerizing sunrises along the coastline. Exploring the east coast unveils its own charm, with attractions like Ao Kai Kwad, Had Sairee Daeng, Laem Bang Bao, and Ao Khlong Hin, extending all the way to Ao Prao.

Explore the wonders of Koh Kood, and you'll discover that the colors of the sea here rival those of the Andaman Sea. You don't need to venture far south to find beautiful seas and stunning waters; Koh Kood offers a captivating experience right in the Gulf of Thailand.

For further details contact,
Ko Kood Princess Tel. 08 6126 7860
Ko Kood Express Tel. 08 7749 0030
Boonsiri Ferries Tel. 08 6333 8560
Superjet Ferry Tel. 06 2559 5444





Trat

Adventure in the Splendor of Khao Yai

After exploring Thailand's concrete jungles, why not venture into the pristine wilderness near the capital? If you agree, let me invite you to embark on an adventure in the lush forests of the world heritage site, "Khao Yai National Park"

Declared as Thailand's first national park on September 18, 1962, Khao Yai has also earned the title of "ASEAN Heritage Park" and was recognized as a UNESCO World Heritage Site in 2005 (B.E. 2548). Covering the vast expanse of the last remaining virgin forest in the Dong Phrayayen-Khao Yai Forest Complex, it spans four provinces: Nakhon Nayok, Nakhon Ratchasima, Prachinburi, and Saraburi.

With its complex and alternating mountainous terrain, Khao Yai is a haven of diverse ecosystems, including dense virgin forests, grassy meadows, and open fields. The park features numerous elements, such as rivers, waterfalls, and various wildlife species, including elephants, deer, and gibbons, commonly spotted in the area. Additionally, the park is home to a variety of plant species, with the highest peak being Khao Laem, serving as the source of several famous waterfalls like "Haew Narok" and "Haew Suwat"

Khao Yai offers around 30 different trekking trails, each showcasing unique and breathtaking scenery. Whether it's hot, rainy, or chilly, the park eagerly awaits your adventurous spirit. Depart from the urban jungle for just a day or two to experience the untouched, pristine nature, as Khao Yai has rightfully earned its place as a Class 7 protected area, boasting the purest and most unspoiled natural beauty.

Khao Yai

amazing
THAILAND



Hiking around Haew Suwat Waterfall



One of the picturesque attractions within the Khao Yai National Park is the renowned Haew Suwat Waterfall. This impressive waterfall is located just 100 meters from the parking lot and approximately 3 kilometers from Pha Kluai Mai Waterfall.

The waterfall features a cascade of water flowing down from a high cliff, spanning about 20 meters. At the base, there is a pool of water and a stream, offering an excellent spot for observation. There are viewpoints from a distance that capture the beauty of the waterfall in its entirety. For those seeking a closer encounter, there are pathways leading down to the lower area with the pool. However, caution is advised during the rainy season when the current is strong and the surroundings can be slippery.

Around the Haew Suwat Waterfall area, there are numerous walking trails to choose from, creating a vast learning experience about nature. Ranging from easy to challenging, these forest trails act as expansive classrooms to enhance your understanding of the environment. One popular trail is Trail No.4 (Pha Kluai Mai - Haew Suwat), starting near the restroom close to Pha Kluai Mai. With a length of 3 kilometers, it takes approximately 1.5 hours to traverse, providing an opportunity to observe various birds and wildlife.

For a slightly more challenging experience, you can opt for Trail No. 5 (Haew Suwat - Thung Yai Khao Laem). Commencing from the Haew Suwat Waterfall parking area, this trail follows the Takhong River canal until reaching a crossing point. After walking for about 3 kilometers, you'll encounter a vast grassland with a minimum duration of 2 hours.

In reality, if you're not fond of hiking or adventure, simply sitting by the waterfall offers a breathtaking and serene experience.



The Magnificent Haew Narok Waterfall

In addition to the awe inspiring Haew Suwat Waterfall, there is another extraordinary natural wonder that makes Khao Yai National Park exceptional: the Haew Narok Waterfall. This majestic waterfall boasts a staggering height of approximately 150 meters, solidifying Khao Yai National Park's status as a global heritage site.

The water flows vertically from the cliff face, creating a powerful cascade into the abyss below. The force of the water is formidable, making it unsafe for water activities, especially during the rainy season.

The grandeur of Haew Narok Waterfall isn't merely about being the largest waterfall in Khao Yai National Park; it holds the title for the largest waterfall in the central region, further highlighting its magnificence. Each day, numerous tourists make their way to Khao Yai National Park to witness the spectacular sight of the glistening white water that results from the convergence of multiple streams. As it plunges, the water forms a breathtaking scene, creating a resonating roar and dispersing refreshing mist into the surrounding air.

Haew Narok Waterfall is characterized by three distinct tiers. The first tier, standing at an impressive 50 meters, requires approximately a 1 kilometer trek on foot, featuring a metal staircase leading to a viewing point created by the park authorities, enhancing convenience for visitors. The second and third tiers, reaching a cumulative height of 150 meters, are situated higher up, offering a commanding view.

At present, these areas are not open to tourists due to the thriving and rich biodiversity of the surrounding forest, serving as a prime feeding ground for various wildlife. For the best viewing of the second and third tiers, the ideal time is between September and October when the water flow is at its peak. Particularly at 10:00 AM, you can witness the stunning phenomenon of sunlight refracting through the water droplets, creating a mesmerizing rainbow.

This is undeniably one of Thailand's top tier waterfalls. Visiting Khao Yai without beholding the grandeur of Haew Narok Waterfall is an experience incomplete. Witness it with your own eyes it's a spectacle not to be missed.

For further details contact, Tel. 0 3731 2282,
0 3731 2284, 0 3731 5664

Toscana Valley

Bringing Italy to Khao Yai

If you've arrived at Khao Yai and are in search of exquisite accommodation, Toscana Valley is highly recommended. Nestled in the heart of nature, this accommodation offers stunning aesthetics reminiscent of Italy, bringing a touch of Europe to Khao Yai.

Toscana Valley is a comprehensive destination featuring not only accommodation but also restaurants, cafes, a sports club, a golf course, and a myriad of activities. It's safe to say that once you're here, you might not need to venture elsewhere for entertainment.

Internally, the resort is divided into three zones, each offering a distinct style: Town Square Suites, Hotel La Casetta, and Toscana Piazza. Upon entering, you'll be captivated by the beautifully designed interiors that transport you to a foreign land. The accommodations are luxuriously adorned, creating an impressive and memorable experience for guests. Importantly, there are numerous picturesque spots for photography enthusiasts. Toscana Valley doesn't restrict access solely to guests; even casual visitors are welcome to explore and appreciate the interior beauty.

Moreover, the destination boasts delightful dining options. For those seeking charming and chic cafes, VINO Cafe & Bar is a popular spot with a variety of beverages and delectable pastries. Pasticceria is another beautiful and vibrant café with unique decor.

If you're planning a trip to Khao Yai and desire luxurious, comfortable accommodation with contemporary and eccentric designs, all within an atmosphere that feels like Europe, Toscana Valley is the place to be.

For further details contact, Tel. 08 4581 6555 ,08 4683 6555
<https://www.toscanavalley.com/>





If you desire an agricultural tourism experience, immerse yourself in the camping atmosphere and get up close with nature at Farm Chokchai, the largest dairy farm in Asia. Located in Pak Chong District, Nakhon Ratchasima Province, Farm Chokchai is renowned as the largest dairy farm in Asia and has been a well known agricultural tourism destination for a long time. Experience the rural way of life in the Western style amidst the vast fields, escaping the urban lifestyle.



At Farm Chokchai, you can enjoy the countryside ambiance, gain knowledge, and indulge in the pleasures of a farmer's lifestyle. Explore the farm's large scale dairy business, participate in milking cows by yourself, engage in the production of fresh milk ice cream, witness the cowboy lifestyle show, marvel at the agility of herding dogs, bottle feed calves, and much more. Try horseback riding, milking cows, and transform into a cool cowboy. Enjoy various activities and shows within the farm. Moreover, there are comfortable air conditioned camp style accommodations available for a relaxing stay on your day off.



Farm Chokchai

Asia's Largest Dairy Farm

Open daily 09.30 – 16.30 hrs.
For further details contact, Tel. 098-719-4464 , 061-394-589
<https://farmchokchai.com>



The fresh air of Khao Yai makes it a perfect canvas for cultivation, and if you doubt it, just visit the GranMonte Vineyard, where vines have flourished for over 20 years. Boasting more than 10 grape varieties used for various products beyond wine, GranMonte Vineyard warmly invites everyone to tour the vineyard and stay overnight, offering a year round experience.

Knowledgeable staff guide visitors through the fascinating process of winemaking, from hand harvesting to fermentation and care. The vineyard produces around 300,000 bottles annually, exported to numerous countries such as France, Germany, Italy, and Australia, in addition to being available locally in Thailand.

Nestled amidst stunning mountain views in every direction, the vineyard is a serene escape from the outside world. Beyond the grapevines that dominate the landscape, Gran Monte Vineyard encompasses a winery, the VinCotto restaurant, a delightful Frenchstyle homestead restaurant, and the GranMonte Wine Cottage accommodation, offering panoramic views of the vineyard and the picturesque mountains.

Engage in the Vineyard & Winery Tour, beginning with a leisurely ride to explore the diverse grape varieties used for both experimentation and wine production. The vineyard predominantly features the Gran Monsoon Valley variety, renowned for its wine. Witness the winemaking process up close, from fermentation tanks and oak barrels to laboratories and bottling equipment, learning that the journey from grape to wine is intricate and fascinating.

For a complete experience, consider spending a night at GranMonte Wine Cottage, immersing yourself in nature. Wake up early for a cycling adventure through the vineyards this alone makes for a truly joyful Khao Yai getaway.

GranMonte Vineyard

Tour A Grape Escape in Khao Yai

Open daily 08.00 – 20.00 hrs.
For further details contact, Tel. 044-009-543, 044-009-544
<http://www.granmonte.com/>



Khao Yai

Recommended Restaurants



MICHELIN BIB GOURMAND

Nina's Cafe & Restaurant

Penlaos

Krua kampan Khao Yai

Selected Restaurant

Yung Khao

Jun Khao

Midwinter



Kanchanaburi

amazing
THAILAND

Kanchanaburi

A City Rich in History

Beyond the well known destinations like Phuket, Chiang Mai, and Samui, Kanchanaburi emerges as a province that captivates the attention of international travelers. This appeal is likely due to Kanchanaburi's extensive historical significance and a myriad of stories from the past.

Kanchanaburi, a sizable province, offers diverse attractions catering to various interests whether you're an eco-adventurer, nature lover, extreme activity enthusiast, history buff, or a fan of trendy cafes, Kanchanaburi has something for everyone.

The province is a haven of natural beauty, featuring lush forests, vibrant flora, cascading waterfalls, and a rich cultural tapestry with beautiful traditions. Inhabitants of various ethnicities, including Thai, Burmese, Mon, and Karen, coexist harmoniously, displaying mutual understanding and cooperation.

Moreover, Kanchanaburi is steeped in captivating historical narratives, making it a significant tourist destination with distinctive landmarks. Events from World War II, such as the construction of the Death Railway bridge over the River Kwai, the Allied Forces cemetery, and the Hellfire Pass Museum, provide tangible evidence of the region's historical importance.

Kanchanaburi's allure lies not only in its past but also in its commitment to preserving and showcasing these historical sites. The Kwai River Bridge, the Allied Forces cemetery, and the Hellfire Pass Museum are key highlights that underscore Kanchanaburi's role in history.

In essence, Kanchanaburi stands as an enticing destination for those seeking a holistic travel experience that seamlessly blends nature, culture, and history.

Bridge Over the River Kwai

Kanchanaburi's Landmark

When you think of Kanchanaburi, one of the top destinations that inevitably comes to mind is the Bridge over the River Kwai. This iconic structure, a testament to both history and engineering, stretches approximately 300 meters across the river, making it a key landmark in Kanchanaburi. Notably, it holds historical significance as part of the railway line constructed during World War II.

Built with the sweat and sacrifice of numerous laborers, including prisoners of war, the Bridge over the River Kwai aimed to establish a railway route, spanning 415 kilometers from Nong Pladuk Junction in Ratchaburi Province to Thanbyuzayat in Myanmar. This railway served as a crucial supply line for Japanese forces during their offensive operations in Myanmar and India.

The bridge officially opened on December 25, 1943. However, in November 1944, it became a target during an aerial attack by Allied forces, resulting in significant damage to its central section. Following Japan's surrender on August 15, 1945 the bridge served as a poignant reminder of wartime struggles.

Today, the Bridge over the River Kwai has undergone restoration and reconstruction, replacing parts damaged during the war. It has transformed into a significant tourist attraction in Kanchanaburi, offering visitors the opportunity to walk on the railway tracks, spanning 300 meters, and providing picturesque views of the River Kwai.

An annual highlight is the Bridge Week held from late November to early December, attracting tourists to witness various events and activities around this historic landmark.

For further details contact, Tel. 0 3451 1285.



Sai Yok Yai Waterfall

Kanchanaburi's Captivating Waterfall

When it comes to beautiful waterfalls in Kanchanaburi, the name “Sai Yok Yai Waterfall” is undoubtedly a top choice. This waterfall is part of the Sai Yok National Park and holds a long history dating back to the reign of King Rama V when the monarch made a royal visit to Sai Yok Yai Waterfall twice.

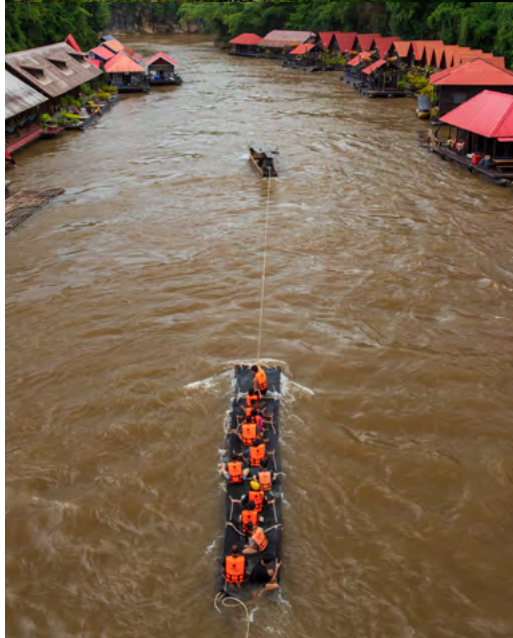
Within the national park, there are numerous attractions waiting to be explored. Starting with the “Sai Yok Noi Waterfall” a single tier waterfall formed by the collapse of a limestone cliff, creating a picturesque cascade approximately 30 meters high. The waterfall is at its most splendid during the rainy and cool seasons, while it may have less water during the hot season. Surrounding the waterfall, diverse species of trees provide ample shade, creating an inviting atmosphere.

Additionally, there's the “Sai Yok Yai Waterfall” a large waterfall flowing from the cliff into the small Kwai Noi River. It consists of a single layer, with the water flowing down and being embraced by alternating layers of rocks, with a height of about 8 meters. To enjoy the beauty of Sai Yok Yai Waterfall fully, visitors can cross a suspension bridge in the national park to the other side, offering a stunning view of the cascading water.

Another hidden gem within the park is the “Sai Yok Lek Waterfall” a year round waterfall fed by clear and clean water originating from the upstream area. This waterfall, although smaller, boasts clarity and cleanliness comparable to Sai Yok Yai Waterfall.

After exploring the waterfalls, if time permits, there are many other places to visit within the national park, including the dazzling Daowadueng Cave, Lawa Cave, viewpoints in Sai Yok National Park, and the Sai Yok Suspension Bridge. Sai Yok Yai Waterfall stands out as a must visit tourist destination in Kanchanaburi.

Open daily 08.00 – 17.00 hrs.
Entrance fee: Adults 300 Baht; Children 200 Baht
For further details contact, Tel. 0 3468 6024, 08 9028 1958





One quintessential activity that every visitor to Kanchanaburi should indulge in is finding a riverside spot, lying down, and immersing themselves in the serene melody of flowing waters. Luckily, Kanchanaburi offers an abundance of choices for such tranquil retreats along its rivers.

Lounging by the riverbanks of the Kwai, you'll experience the true essence of nature. This river is not only the origin of Thailand's river rafting adventures but also boasts breathtaking scenery with its lush, verdant foliage and the iconic historical railway bridge providing a picturesque backdrop. With numerous riverside accommodations available, if comfort is a priority,

“The Float House River Kwai” is highly recommended. This unique resort embodies the concept of “preserving the forest and the river, caring for your leisure days” It's a floating boutique resort nestled amid the hills, slowing down the pace of life, bringing you closer to nature.

Another enchanting choice is the “River Kwai Jungle Rafts Floating Hotel” situated in the heart of Kanchanaburi's green jungle along the Kwai River. Here, serenity reaches its zenith, offering a private and peaceful escape. With an eco friendly concept and no electricity, the resort relies on lanterns at night, creating a cool and comfortable atmosphere by the water's edge.

For a more adventurous experience, consider “Cross River Kwai” a unique riverside accommodation with a charming design reminiscent of a train carriage, paying homage to the province's history. Try a clandestine night by the water, and you'll return to Bangkok with a contented smile.



Riverside Bliss

Reclining to the Sounds of
Kanchanaburi's Waterways





Erawan Waterfall

Earthly Paradise

When thinking of waterfalls renowned for their crystal clear and beautifully colored waters in Kanchanaburi, “Erawan Waterfall” immediately comes to mind. Located in the Erawan National Park, this waterfall, formerly known as “Sadao Monglai Waterfall” originates from the Mae Monglai stream, cascading over various layers of rocks, totaling seven tiers over a distance of approximately 1,500 meters.



Each tier possesses its own distinctive beauty and unique characteristics. As the water flows down the layers, the seventh tier, in particular, forms a shape resembling three elephant trunks, aptly named “Erawan” which serves as the inspiration behind both the waterfall and the national park’s name.



Erawan Waterfall stands out with its strikingly beautiful azure green water, offering clarity that allows you to see fish swimming in almost every tier. The mesmerizing color results from the prevalent limestone in the area, along with other mineral elements, contributing to the growth of small green algae in the stream. When sunlight shines on the water, the absorbed red light creates the stunning blue green hue, showcasing the limestone base of the waterfall.



While Erawan Waterfall boasts seven tiers, the highlight undoubtedly lies in the seventh tier. This tier captivates with its magnificent water curtain flowing down from the towering cliff, converging into a turquoise pool below.



To truly comprehend the earthly paradise that is Erawan Waterfall, one must witness it firsthand.

Open daily 07.00 – 16.30 hrs.
Entrance fee: Adults 300 Baht; Children 150 Baht
For further details contact, Tel. 0 3457 4222, 0 3457 4234



Kanchanaburi

Phuket

A Complete Charmer

One of the brightest gems in the Thai landscape that every traveler to Thailand must explore is the province of Phuket. Renowned for its pristine white sandy beaches, crystal clear waters, and abundant sunshine, Phuket is a destination that seamlessly blends luxurious seaside resorts with vibrant entertainment, creating an atmosphere of unparalleled allure.

Phuket, the largest island in Thailand, is a perfect retreat, offering relaxation and a myriad of exciting activities. Surrounded by more than 10 stunning beaches, this large island is adorned with smaller islets and tiny coves, such as Racha Island, Coral Island, and Coconut Island.

Beyond its natural beauty, Phuket is rich in cultural history, reflecting the enduring way of life of its people. Exploring the old town of Phuket reveals charming remnants of the past, with traditional houses and authentic local cuisine that exemplify the island's cultural heritage.

Formerly known as "Thalang" Phuket was recognized by seafarers as "Jungeylon" serving as a bustling seaport and trading hub. The island thrived on the lucrative tin mining industry, and later, Chinese Hokkien immigrants left a lasting impact by establishing colonial style residences and incorporating distinctive Chinese art, which is still visible today.

Phuket's charm lies in its unique combination of natural beauty and rich historical background. It's a place where the allure of nature intertwines seamlessly with its captivating history, making Phuket an enchanting destination like no other.

Phuket

amazing
THAILAND



Patong Beach

The Epicenter of Phuket



Surrounded by nearly 20 beaches, Patong Beach stands out as the most renowned, attracting tourists throughout the year. It is a beach brimming with conveniences, including hotels, restaurants, diving shops, water sports equipment stores, and much more, all catering to the needs of visitors.

Patong Beach boasts a U-shaped coastline that stretches over 4 kilometers, with headlands at both ends providing excellent wave protection. The emerald green sea, fine and clean sandy shores, make it a favorite for swimming and sunbathing. The beachfront offers a variety of activities, such as jetskiing, parasailing, windsurfing, or renting long tail boats to explore nearby beaches.

What truly sets Patong Beach apart is its vibrant and entertaining atmosphere. It hosts a plethora of entertainment venues, providing nightlife that ensures everyone has a good time. It's safe to say that Patong Beach is the most convenient and exciting beach in Phuket, offering not only accommodation but also tours, shopping centers, entertainment, souvenir shops, and more. Some even say that if you can't find it at Patong Beach, you probably won't find it anywhere else in Phuket.

In essence, when in Phuket, one might miss other beaches, but never Patong Beach.

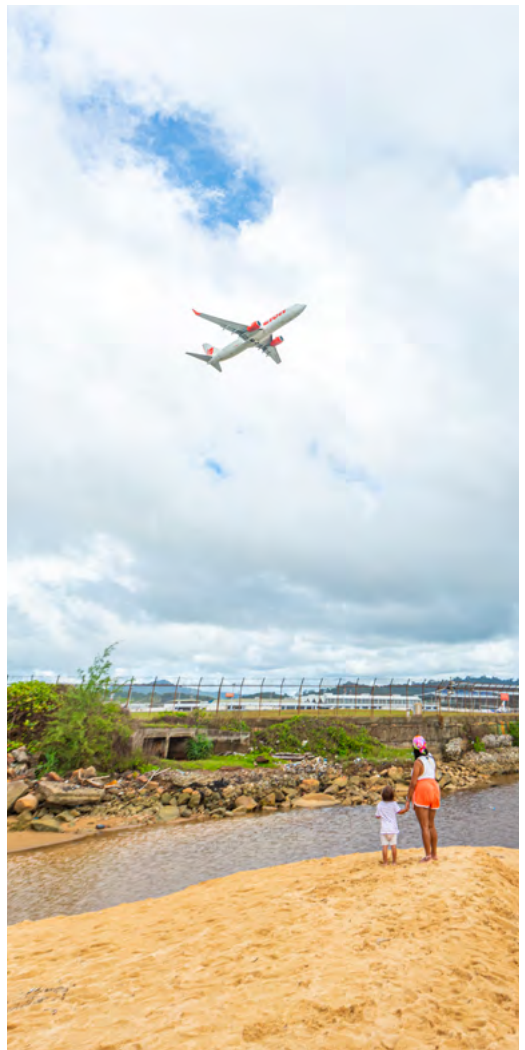
Capture Moments with the Airplanes at Mai Khao Beach

Mai Khao Beach is yet another landmark of Phuket, offering not only beautiful shores but also a prime spot for capturing moments with airplanes. Referred to locally as the “Airport Beach” it claims the title of the longest beach in the province, extending into the vicinity of Phuket International Airport. Throughout the day, tourists gather here to take snapshots of airplanes landing and taking off, creating picturesque scenes to showcase on social media.

However, what many might not know is that this beach holds a cultural tradition known as “Spa sai” a practice of lying down on the sand for health benefits. The sand here is notably special coarse, clean, and nonsticky, making it a distinctive feature. Those experiencing fatigue are encouraged to try this traditional method, which is believed to offer therapeutic relief. Whether seeking a remedy for aches or simply desiring relaxation, lying down in the unique sand of Mai Khao Beach is a recommended experience.

Moreover, Mai Khao Beach is part of the Sirinat National Park, serving as a nesting ground for three types of sea turtles: the Green Turtle, the Hawksbill Turtle, and the Leatherback Turtle. Visitors arriving between November and February each year may have the chance to witness the fascinating sight of turtle egg laying.

For those seeking a beach with stunning sunset views, Mai Khao Beach stands out as a hot spot for enjoying picturesque sunsets.





For those seeking a serene escape away from the bustling scenes of Phuket, Kamala Beach is the perfect answer. Located 26 kilometers from the heart of Phuket town, this beach stretches approximately 2 kilometers, offering a peaceful haven for relaxation in a private world away from the hustle and bustle.

While it provides a tranquil environment, Kamala Beach is well equipped with various accommodations and conveniences to cater to tourists. From restaurants and minimarts to spas and worldclass beach clubs, the beach offers a range of options. At the same time, it boasts beautiful natural landscapes and a relaxing atmosphere. Visitors often engage in surfing or paddle boarding during the day and wait to witness breathtaking sunsets in the evening.

Noteworthy is the artistic installation “Jitjaakrawan” (The Rotation of the Earth) created as a memorial to remind people of the devastating tsunami. Kamala Beach itself experienced the impact of that tragic event. The artwork symbolizes the Earth’s rotation and the natural changes that strive for balance. It serves as a poignant reminder for tourists to reflect on the significant events that occurred during that time.

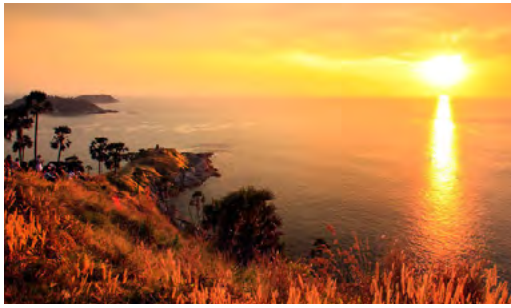
Whether you’re into riding the waves, seeking tranquil corners in Phuket, or simply enjoying the breathtaking sunset views, Kamala Beach is the place to be.



Kamala Beach

Tranquil Beauty in Phuket





Promthep Cape

The Breathtaking Sunset Viewpoint

Witnessing the sunset in Phuket is an enchanting experience, and there's no better place to marvel at this natural spectacle than Promthep Cape. Renowned as one of Phuket's most beautiful sunset viewpoints, Promthep Cape is not only a picturesque destination but also a cultural landmark representing Thailand's sunset time.

At Promthep Cape, comfortable seating is available for visitors to relax and enjoy the mesmerizing sunset. Moreover, you can take a stroll to the tip of the cape for an additional perspective. Walking towards the edge allows you to witness the stunning emerald green sea, adding to the already breathtaking scenery.

During the hot season, golden fields of grass beautifully cover the landscape, enhancing the overall picturesque view. Coupled with the panoramic sight of various islands, Promthep Cape stands out as an unrivaled spot to witness the sunset. However, if you plan to visit during the rainy season, you'll be treated to lush greenery covering the fields, creating a unique and equally beautiful landscape.

For those seeking to admire the sunset here, it is advisable to arrive at least 1-2 hours before the sun sets to secure a good spot. Otherwise, you may face traffic congestion and difficulty finding parking, potentially missing the spectacular moment.

Promthep Cape is not only a scenic attraction but also home to the Kanchanaphisek lighthouse, built to commemorate the 50th anniversary of King Rama IX's reign. Additionally, it serves as a navigational landmark for sea travel in the Andaman Sea, emphasizing Phuket's importance as a significant maritime hub.

Don't miss the opportunity to check in at Promthep Cape, as it encapsulates the essence of Phuket's natural beauty and cultural significance.





Hanuman World

An Adventure Awaits!

If you find yourself in Phuket and crave some thrilling experiences, Hanuman World is the place to be for adventure enthusiasts. It's not just an ordinary amusement park; it's an eco-adventure destination that brings you close to the heart of nature.

Firstly, let's acquaint ourselves with "Hanuman" This is the name of the mythical monkey god from the Hindu Ramayana and Buddhist folklore. At Hanuman World, you get to soar through the treetops like a god of the forest. Upon arrival, your guide will take you above the treetops for a diverse adventure. Choose from a variety of activities, including ziplining through multiple bases, freefalling along the natural contours, walking on sky bridges, and ascending sky stairs, depending on the package you select.

Experience breathtaking views of Phuket and the Andaman Sea from elevated platforms. Not only that, but you'll also cross the longest sky bridge in Thailand, offering a mesmerizing perspective. To add a tropical twist, savor various local fruits while perched on the skywalk.

For the adrenaline junkies, the roller coaster zipline is a must try. Feel the rush as you zip along at 40 kilometers per hour, covering a distance of 800 meters. The journey concludes with a delectable Thai lunch at the Hanuman World restaurant.

Hanuman World is not just an adventure; it's an opportunity to connect with nature, challenge your limits, and create memories that will last a lifetime. Don't miss out on this exciting corner of Phuket!

Open daily 08.00 - 18.00 hrs.

Entrance fee : 100 baht.

For further details contact, Tel. 06 297 95533

<https://hanumanworldphuket.com/>



Café Del Mar Phuket

A fusion of Ibiza and Phuket vibes awaits at Cafe del Mar, a meticulously designed café located in Kamala District, Phuket. Offering a beautiful ambiance, top notch facilities, delicious food, and much more, Cafe del Mar is a haven of relaxation in the heart of Phuket.

Recharge your energy with lounging by the pool, surrounded by lush palm trees, and enjoy the soothing view of the sea and the beach. We bring the soft, island style sweetness of Ibiza to the atmosphere of Phuket, catering to your weekly lifestyle with special events. From local rising artists to internationally renowned DJs, we offer a diverse range of events. Additionally, we provide a culinary experience curated by topnotch chefs.

Cafe del Mar is considered one of the best beachfront cafes in Phuket, perfect for a leisurely daytime meal, an impressive evening dinner, or even a private party. Immerse yourself in the delightful atmosphere and enjoy the best of both Ibiza and Phuket vibes





Andamanda Phuket

Dive into Ultimate Water Wonderland

Open daily 10.00 - 19.00 hrs.
Entrance fee : Adults 1,500 Baht ; Children 1,000 Baht.
For further details contact, Tel. 06 297 95533
<https://www.andamandaphuket.com/>

Phuket isn't just about beautiful beaches. It's also home to the extraordinary Andamanda Phuket, the newest and largest water park on the island. This water kingdom takes you on a journey through 5 zones seamlessly blending Thai stories and culture, all under the captivating theme "Thai Legend Meets Fantasy"

The 5 thematic zones, namely The Pearl Palace, Naga Jungle, Emerald Forest, Coral World, and The Great Andaman Bay, boast vast and stunning landscapes. With over 25 attractions and heart-pounding excitement from 12 thrilling slides, including the longest slide in Thailand at 550 meters, it's a paradise for water enthusiasts. Not to be missed are the kid-friendly slides catering to the little ones.

A highlight is the colossal 10,000 square meters wave pool that generates waves up to 3 meters high, the tallest in Southeast Asia. Experience the exhilarating FlowRider, allowing you to ride the waves in style. Besides the water thrills, there are numerous Instagram worthy spots for that perfect check-in moment.

What sets Andamanda Phuket apart is its commitment to environmental sustainability and social responsibility. Operating under a Zero Waste policy and employing 100% recycled water management, the park ensures water conservation and responsible practices.

Andamanda Phuket is not just a water park. It's an extraordinary experience that will leave everyone in awe, making it Phuket's ultimate water wonderland.



Central Phuket

Beyond Shopping

Phuket's allure extends beyond its breathtaking beaches, and for those seeking a shopping haven, look no further than Central Phuket the largest shopping complex in the province that offers more than just a shopping experience.

Spanning two vast wings known as Central Phuket Foresta and Central Phuket Festival, this shopping haven is designed with contemporary elegance, seamlessly connecting the two sections. Here, you'll find a curated selection of over 15 luxury brands, 500 lifestyle shops, and a diverse array of 300 restaurants and cafes.

Central Phuket Foresta is dedicated to offering a luxurious shopping experience, showcasing leading global brands for a lavish shopping spree. The mall not only provides extensive shopping opportunities but also serves as a social media haven with picturesque spots like "The Enchanted Garden" on the first floor, a signature check-in point renowned for its beauty.

Additionally, "The Great Epic" on the G floor stands as an art installation depicting the epic battle between deities and giants from Thai literature, showcasing the contemporary fusion of traditional Thai art and modern creativity. Another highlight is the "Rakang" a large bell installation on the G floor, representing the blend of traditional Thai art with contemporary themes.

On the Central Phuket Festival side, the concept revolves around Casual Lifestyle, catering to the entire family's needs. It's designed to be the first shopping center in Phuket that considers comfort and relaxation for everyone, incorporating elements of shopping, socializing, art appreciation, and exercise, all under one roof. Not to be missed is "AQUARIA PHUKET" Thailand's largest aquarium, featuring over 300 aquatic species totaling 51,000 individuals a world class attraction that adds significant value to your visit.

In essence, Central Phuket is more than just a shopping mall; it's a multifaceted destination that caters to a diverse range of interests and experiences.



Open daily 10.00 - 10.00 hrs.
For further details contact, Tel. 0 7660 3333
<https://www.centralphuket.com/>

Phuket

Recommended Restaurants



MICHELIN®

PRU



MICHELIN BIB GOURMAND

Ton Mayom
Hong Khao Tom Pla
Salaloy
A Pong Mae Sunee
Ta Tuay
Naam Yoi
Pathongko Mae Pranee
Krua Praya Phuket
Krua Kao Kuk
Roti Chaofa
Mu Krop (CHi Hong)
Tu Kab Khao

The Charm Dining Gallery
One Chun
Chom Chan
Toh-Daeng by Bann Ar-Jor
Mook Manee
Mor Mu Dong
Roti Taew Nam
Kha Mu Born (Kathu)
Chuan Chim
Surf & Turf by Soul Kitchen
Gorjan
Khao Tom Thanon Di Buk

Go Benz

Selected Restaurant

Royd
The Smokaccia Laboratory
Samut
Khrua Ohm
Ta Khai
Peang-Prai
La Gaetana
Lertrod
Wagyu Steakhouse
Kruvit Raft (Ban Leam Hin)
Blue Elephant
Loba Bang Niao
Seafood at Trisana
Talung Thai
Nitan

Jampa
Jadjan
Tiffin by La Sala
hom
Sang Ka Sri
Meesapam Khun Yai Chian
Heh
O Tao Bang Niao
Jongjit Kitchen
Suay (Cherngtalay)
O Cha Rot
Acqua
L'Arôme by the Sea
Go La
Jaras Restaurant

Go Ang Seafood



Krabi

Gems in the South of Thailand

Not every province boasts sea of mist, marvelous underwater worlds, beautiful beaches, and stunning islands, but Krabi has it all. Nestled along the Andaman Sea, Krabi is adorned with a myriad of islands, both big and small, with a total of 154 islands, but only 13 are inhabited. Among these, the globally renowned and beautiful islands include Koh Lanta, Koh Phi Phi, Koh Hong, and Koh Rok.

Beyond its marine wonders, Krabi is a haven for nature lovers, featuring expansive mangrove forests, the majestic Nopparat Thara mountain range, the origin of picturesque waterfalls, and the Krabi River. The cultural heritage is rich, showcasing the harmonious coexistence of people from different ethnicities, religions, and beliefs. This diversity makes Krabi a destination that caters to tourists of all ages and preferences, offering activities such as community based tourism, water based activities, adventure activities, rock climbing particularly a favorite in Krabi and much more.

Archaeological evidence suggests that Krabi was once an ancient community in Thailand, with discoveries of stone tools and cave paintings dating back to prehistoric times. The best time to visit is between November and April when the weather is pleasant, rainfall is minimal, and outdoor activities can be enjoyed to the fullest.

Come and explore Krabi, and don't miss the chance to fall in love with its unique charm, setting it apart from the well known destinations of Phuket and Phang Nga.

Krabi
amazing
THAILAND




Railay Beach

Among the World's Finest Beaches

Ranked among the top 100 beaches globally in the 2023 World Beach Guide, Thailand boasts five of these, and one that stands out is Railay Beach in Krabi province.

Railay Beach has become a legendary destination, captivating travelers worldwide with its breathtaking beauty. Located in the Ao Nang district, Mueang Krabi, within the Hat Noppharat Thara-Mu Ko Phi Phi National Park, Railay Beach features fine white sand and striking limestone cliffs that contribute to its stunning scenery.

The beach is divided into two sides Railay West (Sunset Beach), home to the Phra Nang Cave with its revered Princess Shrine, perfect for sunset views, and Railay East, separated by a rocky cliff. Besides the picturesque sands and crystal clear waters, Railay Beach is famous for rock climbing, particularly on the limestone cliffs found at the east end of the beach. The popular climbing spots include Phra Nang Cave Beach and the area near the Princess Cave.

Apart from its natural beauty and pristine seas, Railay Beach offers renowned activities, attracting international visitors. Rock climbing enthusiasts find the limestone cliffs ideal for their adventures. The eastern side, with its renowned Phra Nang Cave Beach and Ao Ton Sai, is a preferred location for rock climbing.

Railay Beach stands out not just for its stunning beauty but also for the variety of activities it offers. Don't miss the chance to relax and engage in exciting adventures at this world class destination in Krabi!

Getting there: Take a passenger boat (Hua Tong boat) at Ao Nang and Noppharat Thara Beaches. The fare is 100 Baht/person/trip, and the journey takes about 20 minutes. Boats are available all day morning-evening. For further details contact, Tel. 0 7566 1145

Koh Hong

Tranquil Beauty Amidst Krabi's Seas

When you arrive in Krabi, missing out on Koh Hong would mean crossing the sea once more. Koh Hong is a serene and tranquil island where you can fully embrace the beauty of nature. The crystal clear green waters are visible to the naked eye, surrounded by large limestone cliffs that give the appearance of being enclosed, hence the name “Koh Hong” which translates to “Room Island”

Formerly known as Koh Lao Bi Le, it is situated within the Hat Noppharat Thara-Mu Ko Phi Phi National Park, a collection of islands such as Koh Saka, Koh Lao Ream, Koh Pak Klong, and the largest, Koh Hong.

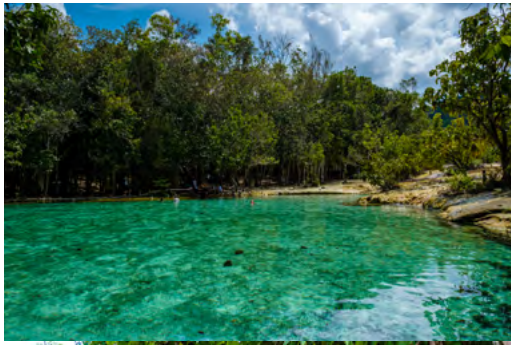
The island features a crescent shaped sandy beach with fine white sand, and the emerald green and transparent sea creates a picturesque scene. One side of the beach has a staircase with 419 steps leading to the mountain's summit, offering a 360 degree panoramic view. From this vantage point, you can observe Koh Hong's beach below and the various islands in the waters of Krabi and Phang Nga provinces.

On the other side of Koh Hong, there's the lagoon, known as “Lagoon Koh Hong” or “Inland Sea” resembling a wide chamber in the middle of the sea. It is surrounded by high cliffs, resembling the mouth of a volcano. Inside the lagoon, the water is a mesmerizing emerald green, suitable for boat docking and water activities. There's only one entrance for boats to enter and exit.

You can rent a long tail boat from Ao Nang or Noppharat Thara Beach in Krabi, with a travel time of approximately 45 minutes. Alternatively, you can opt for a day trip tour from Phuket. Koh Hong beckons, inviting you to explore its captivating beauty and tranquil surroundings.

Getting there: A one-day tour package can be purchased from Krabi town, Ao Nang, or from Phang-nga (because the maritime territories are connected), or hire a Hua Tong boat from Ao Nang or Noppharat Thara Beach that takes about 45 minutes-1 hour.
Entrance fee : Adults 300 Baht ; Children 100 Baht.
The beach area of Ko Hong has a visitor centre, welfare shop, and restrooms
For further details contact, Tel. 0 7648 1188





Krabi boasts numerous renowned tourist destinations, but amid these, there are hidden gems waiting to be discovered. Emerald Pool is one such place, a natural wonder within a lush and vibrant forest.

The crystal clear waters of the famed Emerald Pool were originally a limestone pool with warm spring water, exhibiting a fascinating ecological system. The result is a stunning emerald green natural pool.

If you plan to visit, bring your swimsuit, as Emerald Pool allows visitors to immerse themselves in its waters. The pool, named after the precious emerald gem, is approximately 1.5-2 meters deep. The beauty of Morakot lies in the diversity of colors created by bacteria and algae in the water, providing ever changing hues. For those not strong swimmers, there are seating areas to relax and enjoy the refreshing coolness, providing a delightful and relaxing experience. Importantly, the water color in Emerald Pool can change throughout the day and with different sunlight conditions.

In reality, this pool originates from a warm stream in the lowland forest of the southern region. It consists of three adjacent warm water ponds: the Glass Pond, Morakot Pond, and the Boiling Pond, with temperatures ranging from 30-50 degrees Celsius.

Beyond the abundance of various flora in the area, Emerald Pool is also a haven for rare bird species. The surrounding landscape is adorned with flowing streams, creating a refreshing and tranquil environment.

Not only is this place a hidden jewel in the heart of Krabi's forests, but it stands as one of Thailand's unseen destinations, waiting to be explored.



Emerald Pool

Krabi's Hidden Oasis

Opens daily 08:30-17:00 Hrs.
Entrance fee: Adults 200 Baht ; Children 100 Baht.

Koh Phi Phi

Tropical Paradise in the Andaman Sea

Koh Phi Phi stand as one of the ultimate jewels in the crown of the southern seas, boasting world class beauty. Whether you opt for a day trip from Phuket or Krabi or decide to stay overnight on Phi Phi, the islands offer convenient hotel accommodations.

These islands are part of the Hat Noppharat Thara-Mu Koh Phi Phi National Park. Originally known as “Pulao Pi ah Pi,” meaning islands with a bubbling sound beneath the sea, locals eventually coined the simpler term “Koh Phi Phi” The largest among them is Phi Phi Don, home to stunning beaches where tourists often find relaxation. Notable locations include Ao Ton Sai, the main pier area, and Ao Lo Dalam, not far from Ton Sai.

Moving on to Phi Phi Leh, the first stop is Maya Bay, renowned globally for its breathtaking seascape, featuring a small, crescent shaped bay surrounded by limestone cliffs. This bay gained fame as a filming location for the movie “The Beach” (2000), starring Leonardo DiCaprio. Another enchanting spot is Pileh Lagoon, or Pileh Bay, celebrated for its mesmerizing turquoise lagoon embraced by high cliffs adorned with greenery.

Exploring further, Monkey Beach, a picturesque cove populated by playful monkeys, offers a delightful encounter with nature. Nearby, Viking Cave presents intricate cave paintings and swiftlet nests, showcasing the coexistence of wildlife and ancient art.

Koh Phi Phi continue to capture the hearts of travelers, serving as a world class destination that leaves an indelible mark on all who venture here.



Getting there: There is a speedboat service to and from Ko Phi Phi Don, or boats depart from Khlong Jilad Pier and Krabi Marina Pier in Krabi town. The trip takes about 1 hour, and the fare is 450-500 Baht/seat. There is a passenger boat leaving Rassada Pier, Phuket province to Phi Phi Don as well
For further details contact, Tel. 0 7566 1145
<https://www.dnp.go.th/>

Getting there: Tourists can charter a Hua Tong boat from Ko Phi Phi Don, or buy a day tour package from Krabi and Phuket.
The fee to enter the Park: adults 400 Baht; children 200 Baht.
It is recommended to keep the Park entrance ticket with you because there may be an inspection by the Park officials in both the Phi Phi Don and Phi Phi Le areas.
For further details contact, Tel. 0 7566 1145
<https://www.dnp.go.th/>



Phang Nga

Nature and Culture Oasis

When it comes to the complete travel experience, look no further than Phang Nga, a province that seamlessly blends culture, nature, and the local way of life, inviting travelers to immerse themselves in its diverse offerings.

Discover the beauty of pristine islands, crystal clear seas, and a coastline stretching over 200 kilometers. Explore the intricate network of hills, captivating caves, and picturesque waterfalls. Experience the allure of hot springs and world renowned underwater wonders like Mu Koh Similan and Surin Islands. The journey extends to Thailand's longest mangrove forest in Phang Nga, adding another layer to this enchanting destination.

Phang Nga also reveals a tapestry of cultural diversity and local lifestyles, where Thai, Chinese, and Muslim communities, migrating from neighboring countries, share their heritage through architecture, constructions, and residential buildings.

Delve into the historical roots of Phang Nga, once known as "Mueang Phungnga" named after the Gum Garnished Hill or "Khao Phungnga" within the town. The area was a bustling hub with rich mineral resources, attracting foreign traders seeking to engage in mineral trade. Over time, the pronunciation evolved from "Mueang Phungnga" to "Phang Nga" reflecting the region's blend of lush forests and abundant marine life.

Exploring the archaeological traces of Phang Nga reveals artifacts such as clay pottery, stone ornaments, and seashell fragments found in the caves of Wat Suwan Kuha. The ancient wall paintings within the Ao Phang Nga National Park further showcase the province's historical significance.

The origin of the name "Phang Nga" itself holds significance, as it is believed to mean "water forest" in Malay, accurately encapsulating the essence of this province a harmonious blend of lush forests and coastal abundance.

Phang Nga
amazing
THAILAND



Ao Phang Nga National Park

A Pinnacle of Natural Beauty

One of the most iconic symbols of Phang Nga is the renowned Ao Phang Nga National Park, often synonymous with James Bond Island, a location immortalized in a James Bond film. This captivating island has lured many travelers to its shores, becoming a must visit destination.

However, the national park extends beyond James Bond Island, offering numerous other fascinating attractions. Encompassing areas in Mueang Phang Nga, Takua Thung, and Koh Yao districts, the park predominantly features a marine environment with limestone formations, enchanting caves, and abundant mangrove forests.

The significance of Ao Phang Nga National Park extends to its historical importance. Archaeological evidence, including ancient paintings, pottery fragments, and stone tools discovered in the Suwanakuha Temple cave area, paints a vivid picture of prehistoric human habitation in the region.

The name “Phang Nga” or “Phungnga” is believed to mean “water forest” in Malay, perfectly encapsulating the province’s blend of lush forests and abundant seas.

This national park isn’t just a testament to mesmerizing nature but also a treasure trove of historical wonders. Ancient drawings on the cliffs of “Khao Khian” dating back around 3,000 years, depict various figures of people and animals, offering intriguing insights into the lives of ancient mariners who sought refuge in this captivating haven.

Among the park’s other captivating islands, Koh Tapu, a small islet, stands out, inviting exploration with its white sandy beaches, clear waters, and submerged caves. Additionally, Koh Lana Yu has beautiful caves and tiered waterfalls nestled within.

Ao Phang Nga National Park stands as a timeless and classical destination, eagerly awaiting the arrival of travelers at any given moment.



Immerse Yourself in the Unique Culture of Koh Panyi

Whether you're staying in Phuket or exploring the mainland, one corner of Phang Nga province that should not be missed is Koh Panyi. This is a limestone island with a distinctive towering structure, effectively shielding against the wind and creating a flat sandy surface where a small community thrives. Comprising four small villages Tha Dan, Koh Mai Phai, Koh Mook Nok, and Koh Panyi this area is surrounded by small and large islands, nestled within the sea and mangrove forests of Ao Phang Nga National Park.

Legend has it that the pioneers of Koh Panyi were Javanese Muslims, three families who migrated from Indonesia on three sailboats at the end of the 18th century. It is said that they agreed to raise a flag as a symbol once they found a suitable area. The term "Panyi" translates to "flag," and this marked the establishment of their settlement. For over 300 years, the inhabitants have lived harmoniously, immersed in Islamic culture.

Koh Panyi stands out as a truly unique destination, being an island where people reside amidst the sea. It has become a captivating attraction, drawing travelers to experience a simple, peaceful, and friendly way of life embraced by the locals.

Despite limited flat land, nearly everything is constructed on stilts. The village features a school, a health center, a mosque, and shops. Notably, around 350 houses are dispersed over the water, appearing to float during high tide. This illusion is created as the houses are built on stilts to elevate them above the rising and falling sea levels a practice that dates back to the past.

The heart of Koh Panyi serves as the central area of the village and the location of the Darul Aman Mosque, a two stories architectural gem adorned with golden domes. Another highlight is the world famous floating football field, a symbol of Koh Panyi's tourism that has gained global recognition. Today, there are two football fields one with visible wooden boards from the past and a new field that floats on water.

The locals primarily sustain their livelihood through freshwater fishing, cultivating oysters, and fish farming in cages. However, with the increasing number of tourists, villagers have engaged in additional occupations such as running restaurants, offering boat services, and selling souvenirs mostly dried seafood and jewelry made from mother of pearl.

When you reach Koh Panyi, exploring the fascinating sea caves is a must. It is recommended to rent a kayak and paddle through points with passable openings, enhancing the enjoyment and memorability of your Koh Panyi adventure.

Open daily 07.00 – 16.30 hrs.
Entrance fee: Adults 300 Baht; Children 150 Baht
For further details contact, Tel. 0 3457 4222, 0 3457 4234





Koh Panyi

Bamboo Rafting at Khlong Wang Kiang Khu A Serene Adventure

Embark on a delightful journey amidst the magic of bamboo rafting, just under a 2 hours drive from Phuket or approximately 20 minutes from Khao Lak. Here, we present the tranquil activity of bamboo rafting at Khlong Wang Kiang Khu, a serene and enjoyable natural experience. The journey takes you along a clear and pristine canal fed by natural springs from the high mountains, creating a refreshing atmosphere.

Khlong Wang Kiang Khu, located in the Tambon Taimuang area, is a meeting point for adventure enthusiasts. Formerly known as Khlong Wang Maeng Phu (Canal of the Bumblebee) due to the abundant presence of these creatures, the canal now offers a 3 kilometers bamboo rafting route that takes approximately 30-40 minutes. The water flows gently, offering a clear view of the riverbed, and there are spots along the way where you can dip into the water. The river is shallow and calm, ensuring a safe bamboo rafting experience throughout the year.

Immerse yourself in the shaded ambiance, crystal clear waters, and playful moments as you leisurely float on bamboo rafts guided by skilled staff. Surrounded by lush greenery and the tranquility of the canal, you can simply breathe in the pure air. The path is lined with various vibrant plant species, creating a visually pleasing journey.

Once you've enjoyed the bamboo rafting experience, there's more to explore within the village. Activities such as ATV riding and Ziplining, as well as an opportunity to interact with elephants, await those seeking additional excitement.

If you're one who seeks a nature filled adventure combined with fun activities, bamboo rafting at Khlong Wang Kiang Khu is the perfect answer.

Open daily 8 rounds per day, starting with the first round at 09.00 hrs. the last round at 16.00 hrs.
Entrance fee : Service fee is 500 baht per raft (2 people).
For further details contact, Tel. 09 5410 1988, 08 9727 3021
facebook.com/KomolCorner



Mu Koh Similan National Park

A World-Class Paradise

Welcome to the Mu Koh Similan National Park, a world class island group of unparalleled beauty. There are only a handful of places in Thailand where beauty resonates both above and below the water surface, and the Mu Koh Similan National Park is undoubtedly one of them. It is hailed as a world class destination, an El Dorado for scuba diving enthusiasts. The allure of the Mu Koh Similan is something that everyone must experience at least once.

“Similan” in the Malay language, also known as Yawi, translates to “nine” representing the nine large and small islands scattered from north to south. These islands are Bon, Ba-ngu, Similan, Payu, Ha, Miang, Payan, Payang, and Huyong. Later, the area expanded to include Ta Chai Island, bringing the total to ten islands.

Whether you are traveling from Phuket or Khao Lak, reaching the Mu Koh Similan is convenient, especially during the tourist season from November to April, when daily boat services operate from Tab Lamu Pier. The journey takes just over an hour.

Imagine white sandy beaches as fine as powder, crystal clear turquoise waters teeming with diverse marine life, unique rock formations, and an underwater world filled with a variety of fish species. This is the authentic beauty of the Similan Islands.

The highlight of the Mu Koh Similan is undoubtedly Island number 8, known for its iconic sailing rock, a symbol of the Similan Islands. Visitors are encouraged to capture the moment and, undoubtedly, ascending to the viewpoint is a must. Although the climb is not extensive, it involves some rock scrambling. The reward at the top, however, is a postcard worthy view that erases any fatigue.

From Island number 8, those interested in diving can explore the underwater wonders of Islands number 7, Payu, and Island number 6. These dive sites are renowned for their exceptionally clear waters, diverse marine life, and vibrant coral reefs, solidifying the Similan Islands' global reputation.

If there is one island that must be on your travel itinerary, it is Mu Koh Similan National Park – a destination that defines paradise both above and below the waterline.



Getting there: You can reach Mu Koh Similan by speedboat and the journey takes around 1.5 hours from the Thap Lamu Pier in Lam Kaen subdistrict, Thai Mueang district, Phang-nga. The boat leaves for Ko Miang at 08.00 hrs. and starts the return journey at 15.00 hrs. Package tours are available from travel agents in Phuket or at Thap Lamu pier and are usually priced at around 2,000 - 2,500 baht per person.

For further details contact Tel. 0 2562 0760-3, 0 7645 3272-73 or 0 7645 3275 <https://www.dnp.go.th/>

Phang Nga

Recommended Restaurants



MICHELIN BIB GOURMAND

Takola

Gop Phochana

Sam Chong Seafood

Tonfon Bistro

Khok Kloi Bami Tom

Roe Dang

Yam Khai

Hok Kee Lao

Khanom Chin Pa son

Nai Mung

Mon Phochana

Selected Restaurant

Bang Dean

Khanom Jeen Baan

Tairang

Bang Kan

Anuwat Photchana

Juumpo

Rock-Un

Beach Grill and Bar

Thian Leng Bak Kut Teh

Khrua Nong

Nern khao View Talay

Phi Sao

Khun Thip's Satay

Yi-Oui Noodles

Koh Phangan

Timelessly Beautiful

Regardless of the year, Koh Phangan remains an ever appealing destination. While it was once a haven for budget travelers and backpackers from all corners of the globe, today, Koh Phangan boasts a myriad of luxury resorts, boutique hotels, and new accommodations. The island has never lost its allure, attracting daily travelers from Koh Samui and Surat Thani.

Nowadays, tourists don't just visit Koh Phangan for the infamous Full Moon Party; instead, they come to immerse themselves in the serene and hidden corners of the island, exploring the newly revealed wonders, such as the Paradise Cliff.

For those with ample time to spare, a stroll around the island reveals numerous beautiful beaches. Whether it's the long stretches of sand or the kilometer long beach on the western side, these are favored spots among international tourists for witnessing stunning sunset views.

Take, for example, Mae Haad Beach, with its fine, powdery sand and crystal clear inviting waters. During March to May, the water recedes, creating a sandbar that stretches about 200 meters, allowing visitors to walk across to Koh Ma. Koh Ma is a shallow snorkeling spot and offers the most beautiful coral reefs around Koh Phangan. Another hot spot is Rin Beach, known for hosting the famous Full Moon Party.

However, Koh Phangan is not just a paradise for partygoers. It caters to all, including those who appreciate beautiful beaches, tranquil atmospheres, and diverse natural wonders. The island offers more than just parties; it boasts lush hills, waterfalls, coastal landscapes, Temples, and various cultural attractions.

All these elements contribute to making Koh Phangan a timeless and ever appealing destination for travelers of all preferences.

Phangan

amazing
THAILAND



Full Moon Party

Never Ending Fun



There are many places in the world that attempt to organize Full Moon Parties, but none can compare to the legendary Full Moon Party on Koh Phangan. This is the tale of celebrating the full moon night to its fullest, an event that never fails to be lively and exhilarating. But before you dive into the fun of the Full Moon night, let's delve into the history of how the Full Moon Party on Koh Phangan came to be.

Before becoming a globally renowned monthly event, the first Full Moon Party took place in the year 1985 (B.E. 2528). Initially, it was a small gathering held to express gratitude to the backpackers staying at Paradise Bungalows on Haad Rin Nok Beach. In the beginning, only about 20-30 guests, all residing in Paradise Bungalows, attended the event.

However, with the magical ambiance of the beach and the mesmerizing full moon illuminating the night, the party quickly turned into a spectacular event, leaving a lasting impression on the first group of travelers. This success led to the idea of organizing similar events every full moon night or on the 15th night of each month. From that point on, what started as a simple appreciation gathering for a small group of backpackers evolved into a massive party, drawing around 20,000 to 30,000 participants from around the world every month. It has now become one of the world's most renowned parties, an event that everyone marks on their calendars for at least once in their lifetime.

As the night of fun kicks off after 3 a.m. and stretches into the morning light of the next day, Haad Rin Beach transforms into a lively scene with playing music and enticing revelers to dance throughout the night. Popular tunes keep the partygoers dancing, and there's even a fire show to create unforgettable experiences that make the Full Moon Party on Koh Phangan a must attend event.

Nature's Delight on Koh Tao

Once you arrive in Samui, take a speedboat to explore Koh Tao, a truly captivating natural haven. This small island in the Gulf of Thailand boasts abundant natural beauty and an awe inspiring underwater world, making it a sought after destination.

The island features numerous beautiful beaches, with Sai Ree Beach being the most popular. Sai Ree Beach offers accommodations, restaurants, and various shops, making it the bustling heart of Koh Tao, akin to a bustling street market. The longest beach, with its vibrant atmosphere, is ideal for those seeking lively entertainment. On the other hand, there's the serene and quiet Taa Toh Beach, perfect for those desiring a peaceful escape.

For breathtaking views, head to John Suwan Viewpoint, renowned as the most beautiful spot on Koh Tao. A 30 minutes walk uphill leads to the summit, where you'll witness the convergence of two beaches that appear as if the land has transformed from sandy shores to solid ground. It's an impressive and unforgettable sight, especially during this season when the sea is exceptionally clear.

Don't miss Coco Tie Dye, a tie dye fabric workshop on Koh Tao. Here, you can learn the art of tie dyeing using coconut husks. The resulting tie dye fabric features unique earthy tones distinct from those in the northern or northeastern regions, making it a beautiful and distinctive souvenir from Koh Tao.

While the vibe and ambiance may differ from Samui, Koh Tao is undoubtedly a valuable and enchanting destination worth visiting"

Getting there: To reach Koh Tao it is recommended to take a boat to Koh Samui for convenience. The companies offering boat services between Koh Samui and Koh Tao are as follows.
Lomprayah Speedboat Ltd. Tel. 0 2629 2569-70,
0 7795 0700-1, 06 5350 9040-2 or www.lomprayah.com
Seatran Discovery Ltd. Tel. 0 7795 4171-5, 0 7795 0559,
08 6476 4825 or www.seatrandiscovery.co





Explore the Underwater World at Koh Tao - Koh Nang Yuan

It is well known that around Koh Tao, there are more than 10 beautiful dive spots. In fact, it's not just Koh Tao itself, as adjacent to it is Koh Nang Yuan, with interconnected diving spots. Whether you prefer deep sea diving, snorkeling, or free diving, each spot guarantees the beauty of the underwater world. It's no wonder divers from around the world travel here to explore and learn diving at Koh Tao.

If you join a diving tour, it often starts at Koh Nang Yuan a small island with crystal clear seawater and stunning water colors comparable to the Andaman coast. Before diving, take a 15 minutes walk to the viewpoint on Koh Nangyua, offering a renowned panoramic view of the curved sandy shores meeting in the middle, creating a globally recognized seascape.

Then, start diving near Koh Nang Yuan , beginning with the Japanese Gardens, an underwater spot boasting a magnificent and diverse marine ecosystem, including coral gardens, anemones, and beautifully colored fish resembling a Japanese garden under the sea. Next is Mango Bay, a popular spot for free diving, featuring clustered rocks around the bay, creating an underwater landscape known as the Stone Ring Bay. The bay is a favorite among free divers due to its abundance of fish.

Don't miss Thian Beach, another highlight for diving at Koh Tao, where you might encounter large turtles swimming out to welcome tourists without hesitation.

If you haven't tried diving yet, Koh Tao is the perfect place to learn. But if you're already a diver, Koh Tao is undoubtedly a paradise for underwater enthusiasts.

Experience the Breezy Waves on Koh Samui

In addition to Phuket, which is a paradise for both local and international tourists, Koh Samui is another island that resides in the hearts of many. It not only captures the souls of travelers from around the world but is also globally renowned as the third largest island in Thailand, situated about 84 kilometers from Surat Thani province.

This island boasts beautiful white sandy beaches with numerous renowned names. If you enjoy sunbathing on white sandy beaches, lying down to admire the clear blue sea under the coconut trees on the beach, you'll surely be pleased. However, not to be missed is the program to admire the fascinating Hin Ta Hin Yai rocks, located around Lamai Bay. This natural phenomenon consists of granite rocks eroded by the sea and heat, forming peculiar rock formations.

The charm of Koh Samui is abundant and unforgettable. Those who have been to Samui often return, drawn not only by the beautiful beaches and crystal clear waters but also by the allure of fresh seafood. As for activities on the island, there's plenty to do. For waterfall enthusiasts, Koh Samui offers two delightful waterfalls: Hin Lad Waterfall and Namuang Waterfall. For those interested in animal activities, there's the Samui Butterfly Garden, Snake Farm, and the Monkey Center.

Beyond the natural beauty, Koh Samui blends seamlessly with the local culture that remains the foundation of many communities. Conclude your visit with temple tours on the island, such as Wat Samret, Wat Lamai, and the Laem Sor Pagoda, and you'll have experienced the full spectrum of Koh Samui.

Come on, let yourself be caressed by the breeze and waves, and fully indulge in the delights that Koh Samui has to offer.

Samui



Explore the Beautiful Beaches around Koh Samui

Koh Samui boasts more than 10 beaches, each equipped with accommodations, restaurants, and all amenities. Among them, Chaweng Beach is considered the most popular on the island.

Many say this popularity is due to Chaweng being the longest and most beautiful beach on Koh Samui, stretching approximately 6 kilometers. The fine white sandy beach and clear blue waters make it perfect for swimming. Besides the pristine sand, the beach offers shade with coconut trees, a spacious shoreline, and underwater marvels along the rocky outcrops, such as coral reefs and various fish species.

Chaweng Beach is divided into four sections: North Chaweng Beach, Central Chaweng Beach, South Chaweng Beach, and Little Chaweng Beach. Regardless of the section, witnessing the sunrise over the sea in the morning is a breathtaking experience. At night, numerous shops, restaurants, and various accommodation options cater to tourists.

Another popular beach is Lamai Beach, known for its scenic curved bay, tranquil atmosphere, and clear blue waters. Lined with coconut trees, it offers activities like kayaking, sailing, restaurants, shops, and a range of accommodations.

Close to Lamai Beach is the famous Hin Ta Hin Yai, a natural formation of granite rocks shaped by the sea and heat, resembling male and female genitalia. Locals have aptly named them Grandfather and Grandmother Rocks.

There are many other beautiful beaches, such as Taling Ngam Beach, Thong Nai Pan Beach, and Mae Nam Beach. Exploring Koh Samui's diverse beaches is an ongoing adventure, with each one offering a unique charm.



Mu Koh Ang Thong

A Beautiful Sanctuary near Samui

Entrance fee: Adults 300 baht, Children 150 baht

There is accommodation in the park
as well as a camp site for those with tents.
For further details contact, Tel. 0 7728 0222, 06 4642 5186



Even when you reach Koh Samui, there are many other stunning islands around it waiting to be explored. One of these is the Mu Koh Ang Thong, a beautiful cluster of islands in the Gulf of Thailand. Travelers often embark on morning and evening tours to and from Koh Samui to visit this enchanting archipelago.

Mu Koh Ang Thong consists of 42 islands of various sizes, situated approximately 25 kilometers away from Koh Samui. It was declared the second marine national park in 1980. Tours usually arrive at the archipelago during the midday, and upon reaching the Koh Wua Ta Lab, where the park headquarters is located, visitors can climb to the viewpoint on the island's peak. From there, a breathtaking panoramic view of the 42 islands scattered across the emerald sea unfolds.

Afterward, visitors descend to explore the intriguing stalactite and stalagmite formations within the Bua Bok Cave. The remainder of the time on Koh Wua Ta Lab can be enjoyed with activities like swimming, sunbathing on the sandy beaches, or snorkeling to observe the coral reefs along the beach.

In the afternoon, visitors can continue their journey to explore the picturesque Pileh Cove or the brackish water lagoon known as Koh Mae Koh. This lagoon, a saltwater lake formed by the dissolution of limestone hills, offers opportunities for swimming or kayaking. It allows visitors to paddle and marvel at the beauty of the rocky cliffs and caves up close.

Koh Samui is already beautiful, but discovering Mu Koh Ang Thong reveals that Thailand has many more magnificent islands waiting to be explored.



Explore Coconut Climbing Monkeys



Once you've arrived on the island of Samui, why not immerse yourself in the traditional Thai way of life? Samui is known for its abundance of coconuts, creating a unique bond between the locals and monkeys. There's no better way to witness this connection than by visiting the Coconut Climbing Monkey show.

Not only exclusive to Samui, but Surat Thani also boasts coconut farms where monkeys are trained to harvest coconuts. The Samui Monkey Training Center, located near Bo Phut, is a captivating tourist attraction not far from the local hospital. Monkeys at this training center are taught various skills from a young age, such as climbing coconut trees to collect coconuts and performing entertaining shows.

The monkeys favored for coconut harvesting are a specific breed: short, stout, with short gray or brown fur, a relatively long face, short head fur, and a tail that curls upward. Once trained, these monkeys can harvest approximately 1,000-1,500 coconuts per day.

The primary livelihood of the local community revolves around coconut farming, closely tied to the monkeys.

The training process involves familiarizing the monkeys with coconuts, rotating coconuts, and climbing coconut trees. It takes about 2-3 months of training before the monkeys can successfully harvest coconuts. Monkeys suitable for training are usually around three years old. Additionally, there are shows featuring highly skilled monkeys for tourists to enjoy.

While on Samui, don't miss the chance to witness the incredible skill of coconut climbing monkeys in action.

It's an experience that provides a glimpse into the unique relationship between the locals and these intelligent animals.

Open daily 09.00 – 17.00 hrs.
For further details contact, Tel. 08 1079 7730

Explore the Fishing Village and Shop Along

Bo Phut Walking Street

Bo Phut Beach, located on the northern part of Samui Island, offers a tranquil and captivating atmosphere that never fails to attract tourists. Known for its Fisherman's Village, it stands as one of the oldest fishing villages on the island, boasting beautiful beaches and serving as a historic docking point for fishermen in the past.

Renowned as the most beautiful village on the island, Fisherman's Village has become a major tourist attraction due to its well preserved charm and careful maintenance by the locals. Along the road, you'll find quaint old wooden houses transformed into various shops and restaurants, coexisting with newly constructed wooden structures. This deliberate mix provides visitors with a sense of the authentic local heritage.

Shopping enthusiasts will find delight in the numerous converted old houses that now house a variety of boutiques, selling everything from bohemian clothing and jewelry to souvenirs. The unique eateries offer picturesque views of the sea, allowing you to relax and enjoy the atmosphere throughout the day. Additionally, there are underwater diving shops in the vicinity for those seeking diving trips and tours.

On Friday nights, the street transforms into a lively pedestrian street, featuring artistic performances and an abundance of stalls selling clothing, souvenirs, and food. It's a perfect opportunity to stroll, explore, and indulge in a wide array of delicious cuisines, ranging from cocktails, Thai dishes, international cuisine, barbecue, to seafood. Bo Phut is more than just a quiet corner of Samui it's a hidden gem waiting to be discovered.





Ultimate Fun at SEEN Beach Club

What are the must do activities when visiting the seaside? If your answer includes water play, dining, and capturing beautiful scenes, then SEEN Beach Club Samui is the new destination you absolutely must experience.

SEEN Beach Club is a beachfront club located on Choeng Mon Beach, designed with utmost modernity. Its trendy design might make you feel like you're in a different country altogether. With various seating (or lounging) areas, including an outdoor space featuring two turquoise infinity pools surrounded by large daybeds.

The main pool, centrally located, boasts a pool bar in the middle, allowing you to swim up and order a refreshing juice without leaving the pool. Another pool is an infinity style pool by the beach, providing a quieter and more private atmosphere, with a stunning full view of the sea.

The interior space is dedicated to dining and a comfortable atmosphere, including cabanas for those seeking privacy. The tropical inspired decor blends geometric patterns and curves reminiscent of beach clubs in Miami and California from the 50s, enhancing the Instagram worthy ambiance at every turn.

SEEN Beach Club serves a diverse range of Pan Eclectic cuisine, heavily influenced by Mediterranean, Asian, and American flavors. The menu also includes trendy and stylish food options. For those visiting on Sundays, enjoy the Sun Day Brunch, where you can groove to the beats of DJs and indulge in an endless buffet of delectable dishes.

And for Saturday nights, don't miss the Sin@ SEEN party, ensuring you have a blast from evening until midnight.

Now, you know which day to plan your visit to Samui!

Open daily 11.00 – 23.00 hrs.
For further details contact, Tel. 0 7795 6800
<https://www.seenbeachclubsamui.com/>

Nikki Beach Club



Open daily 11.00 – 01.00 hrs.
For further details contact, Tel. 0 7791 4500
<https://koh-samui.nikkibeach.com/dine/beach-club/>

A world class club that many may not be aware of, Nikki Beach Club, renowned for its name, has establishments in glamorous locations worldwide, including Miami, Saint Tropez, Saint Barth, Marbella, Ibiza, Dubai, and many others. Fortunately, this upscale beach club has also found its home on the island of Samui.

Situated away from the coastline, Nikki Beach Club offers a breathtaking view of the beautiful sunset over Lipa Noi Beach, just a few steps away. With a relaxed atmosphere, a stunning beachfront, and modern decor, this luxurious beach club boasts the longest swimming pool in Samui, approximately 70 meters long, creating a tropical paradise feel. The ambiance is akin to being in the midst of a coconut palm forest.

In addition to the impressive pool, Nikki Beach Club features a beachfront restaurant with views of the lush tropical garden, serving a diverse menu of seafood, Thai cuisine, and international dishes. The venue also includes a cafe with DJs and live music, adding to the signature Nikki Beach style of entertainment. If you're in Samui and looking for a beach club that is brimming with fun and character, Nikki Beach Club is a must-visit destination for relaxation and enjoyment.



Koh Samui

Recommended Restaurants



MICHELIN BIB GOURMAND

Baan Suan Lung Khai

Jun Hom

Kapi Sator

Krua Chao Baan Samui

Selected Restaurant

Saffron

Khao Horm

FishHouse

Koh Thai Kitchen

The Ranch

Bang Por Seafood (Takho)

Long Dtai

Chiang Mai

amazing
THAILAND



Chiang Mai City of Cultural Splendor

Chiang Mai stands as an alluring destination, beckoning travelers to immerse themselves in its rich cultural tapestry. This city encapsulates the essence of Lanna culture, expressed through its diverse culinary offerings, the grandeur of Wat Phra Singh, and the awe inspiring beauty of its natural surroundings. Chiang Mai, with its multifaceted allure, has everything a traveler desires.

Popular tourist activities in the province include the pilgrimage to the revered Doi Suthep, a significant local landmark, providing an insight into the local way of life. Exploring the vibrant Nimmanhaemin Road offers the chance to purchase unique handmade items, and a visit to the Royal Flora Ratchaphruek Park allows one to marvel at an array of plant species.

Nature lovers should not miss the opportunity to venture into the mountains and visit various peaks, including the highest point in Thailand, Doi Inthanon. Traverse the beautiful Monjam stairs, experience the cool breeze while admiring the Himalayan cherry blossoms on Doi Ang Khang, engage in eco-friendly tourism in Mae Kampong, and explore the Hmong village on Doi Pui.

Chiang Mai, renowned as the hub for art, handicrafts, and traditional Lanna culture, has rightfully earned the title of the “City of Cultural Splendor” This distinction attracts millions of travelers each year, all eager to indulge in the enchanting atmosphere and cultural richness that Chiang Mai proudly offers.



When discussing a city that is both grand and ancient in the realm of natural wonders, Chiang Mai undoubtedly takes center stage. Renowned for its diverse and delectable offerings, Chiang Mai is a destination where every aspect of travel enthusiasts' desires is fulfilled. From trekking through forests, scaling mountains, elephant riding, and river cruising to cave exploration, cycling, observing hill tribe lifestyles, and paying homage to splendid temples, Chiang Mai presents an array of experiences.

However, for those seeking to greet the cascading beauty of waterfalls and immerse themselves in pristine nature, a visit to Mae Ya Waterfall is a must. Here, you will discover one of Thailand's most captivating waterfalls.

Mae Ya Waterfall is the largest waterfall in Chiang Mai, boasting not only size but also unparalleled beauty, earning its place among the top ten waterfalls in Thailand. To witness the splendor, visitors embark on a 300 meters trek from the parking area along a stream to reach the waterfall. There, a majestic cascade descends from a towering cliff approximately 280 meters high, creating a mesmerizing curtain of water that gracefully flows and converges into a crystal clear pool below. Waterfall enthusiasts can safely indulge in the refreshing waters.

For nature enthusiasts, the surrounding area offers lush and tranquil hills and forests, providing a serene ambiance. The abundant water of Mae Ya originates from the high peaks of Doi Inthanon, Thailand's highest mountain. Not far from Mae Ya, other waterfalls such as Mae Kampong, Wachirathan, and Siriphum Waterfall await exploration.

In essence, for those fortunate enough to visit Chiang Mai, a journey to Mae Ya Waterfall is a must. It's an opportunity not to be missed, a testament to the exquisite beauty that Chiang Mai has to offer.



Mae Ya Waterfall

Enchanting Cascades in the Realm of Serenity

Open daily 08.30 – 17.00 hrs.
Entrance fee: Adults 300 Baht; Children 150 Baht
For further details contact, Tel. 0 5333 8195,
0 5333 8324

Enjoy Fun Activities at Elephant Camps in Chiang Mai

When in Chiang Mai, consider seizing the opportunity to explore the Elephant Camps, a delightful experience, especially for families with children. Chiang Mai boasts several Elephant Camps, each offering unique activities, such as feeding, riding, and bathing elephants. This makes it a perfect family friendly adventure.

Chiang Mai is home to multiple Elephant Camps, providing tourists with the chance to witness, engage, and capture memorable moments with these majestic creatures. Activities include feeding elephants, taking elephant rides, and enjoying interactive bathing sessions. Visitors can even take quirky photos with the elephants and share these experiences on social media. Additionally, some camps offer the option to contribute to elephant care through donations for their well-being.

One notable Elephant Camp in Chiang Mai is the renowned “Maesa Elephant Camp” It stands out as a large scale elephant conservation center, recognized as the largest in Northern Thailand. Maesa Elephant Camp offers an immersive experience, allowing visitors to enjoy the natural beauty of the surrounding forest while interacting closely with the elephants. The camp provides educational insights into elephant training techniques and the lifestyle of these gentle giants. Furthermore, Maesa Elephant Camp features exciting elephant shows that are both thrilling and captivating.

Among the Elephant Camps, “Maesa Elephant Camp” stands out as one of the most famous ones. Regarded as a village dedicated to elephant conservation, it is the largest in Northern Thailand. The camp not only allows visitors to experience close encounters with elephants but also facilitates an understanding of proper elephant training methods. The immersive activities include learning about the elephants’ lives through up-close bathing sessions. What makes Maesa Elephant Mae Sa special is its array of thrilling elephant shows, providing a truly exciting and memorable experience.

Apart from Maesa Elephant Camp, is another noteworthy destination. It stands out for its commitment to preserving elephants and provides an opportunity to visit “Grandma Boonmee” an elderly elephant over 70 years old. The camp is surrounded by lush nature, offering an enriching experience. Moreover, activities like river rafting in the Mae Taeng River are available within the camp.

There are several other Elephant Camps in Chiang Mai ready to offer unique and positive experiences through these majestic creatures.



Immerse Yourself in the Natural Beauty of Doi Inthanon's Forest Trails



Whenever you feel the need to change the scenery and be surrounded by nature's embrace, consider heading to the heart of nature, specifically beneath the sky reaching peaks of Doi Inthanon. This mountain, the highest in Thailand at an elevation of 2,565 meters, is part of Doi Inthanon National Park in Chiang Mai province. The region is characterized by intricate mountain ranges and a consistently cool climate, with misty clouds drifting throughout the year.

Doi Inthanon has become a haven for rare plant species, especially in the dense and pristine forests where moss covered trees and ferns thrive. The unique climate supports a rich diversity of flora, including elusive orchids and the renowned "Siamese Sakura" wild roses. Along the nature study trails, two primary routes are available for exploration.

The first is the "Ang Ka Nature Trail" perfect for a short stroll through the evergreen and cloud forests, spanning only 360 meters and taking approximately 15 to 20 minutes to complete. The park has constructed elevated wooden walkways, allowing visitors to meander seamlessly through the lush surroundings.

The second trail is the "Kew Mae Pan Nature Trail" extending approximately 3 kilometers, ideal for those seeking a genuine connection with nature. This route takes you through various forest landscapes and offers stunning panoramic views of the surrounding cliffs adorned with blooming Siamese Sakura during the winter months.

Embark on a journey to breathe in the pure air of Doi Inthanon, and let the forest trails be your guide to discovering the untouched wonders of Chiang Mai's natural beauty.

Open daily 05.00 – 18.00 hrs.
Entrance fee: Adults 300 Baht; Children 150 Baht
For further details contact, Tel. 0 5328 6728

Discover the Art of Umbrella Making at Bo Sang Village

Explore the enchanting world of traditional umbrella craftsmanship at Bo Sang Village, located just 9 kilometers from Chiang Mai. Renowned for its exquisite handcrafted umbrellas, Bo Sang Village has earned a reputation as a hub of artistic expression in the realm of Thai handicrafts.

In the past, Bo Sang was primarily an agricultural community, with villagers engaging in various crafts during their leisure time. However, it was the art of making Sa paper umbrellas that brought fame to the village. Over time, government initiatives aimed at improving the quality of Sa paper and enhancing umbrella designs elevated the craft to an industrial level.

Bo Sang umbrellas are crafted not only from Sa paper but also from silk and cotton fabric. As the demand for Bo Sang umbrellas grew, the production process became more industrialized, involving nearby villages in the production of various umbrella components. Bo Sang Village emerged as the central hub for assembling and marketing these beautifully crafted umbrellas.

The Bo Sang Umbrella Making Industry Center showcases the step by step process of crafting umbrellas, from the production of Sa paper to the construction of the umbrella frame. The artisans demonstrate the meticulous art of painting intricate designs on the umbrellas, using a combination of Sa paper, silk, and vibrant colors.

In addition to Sa paper umbrellas, the village also produces exquisite silk and cotton umbrellas. The artisans apply a special technique of mixing powdered clay with tamarind water to make the paper more durable. Afterward, the white paper is laid out and dried in the sun before being adorned with colorful designs. To ensure longevity, the artisans use an oil-based paint mixed with sesame or castor oil, making the umbrellas resistant to sun and rain.

Witness the cultural heritage of Chiang Mai come to life as you delve into the captivating artistry of Bo Sang's umbrella making.



Village of Silver Wua Lai Road Craftsmanship in Chiang Mai

The artistic community of Wat Sri Suphan, also known as the Silver Village or “Wua Lai Road” community in Chiang Mai, has gained renown for its production of traditional silverware. This community, rooted in the heritage of Wat Sri Suphan, has been practicing the art of silver crafting for over 700 years, dating back to the time of King Mengrai, the founder of Chiang Mai in 1296.

The history of silverware crafting in the Wua Lai community reveals a rich tradition that originated during the reign of King Mengrai. Seeking to diversify the livelihoods of the populace beyond agriculture, the king fostered relationships with neighboring regions, leading to cultural exchanges. Negotiations with skilled craftsmen from the Sukhothai Kingdom resulted in the migration of these artisans to Chiang Mai. The craftsmen, including silversmiths, goldsmiths, engravers, molders, and embossers, brought their expertise to train the local villagers.

Under King Mengrai’s rule, Chiang Mai flourished in politics, governance, arts, and culture, gaining acceptance from neighboring kingdoms. Local artisans, having received training, became skilled in the craft. The silver craftsmen of Wua Lai, originally referred to as the “Wua Lai Village” were predominantly knowledgeable and skilled in the art of silverware crafting, inheriting wisdom from their ancestors and maintaining the profession to the present day.

From a historical perspective, the Wua Lai community has evolved into a prominent artistic hub, particularly renowned for its metalwork. The villagers have overcome numerous challenges, shaping their way of life, cultural heritage, and intellectual creativity. Their unique local identity has allowed them to create exquisite pieces of art that reflect the true essence of their spirit, beautifully capturing the essence of their genuine soul.



Shopping on Chiang Mai's Walking Streets



Wondering where to indulge in shopping while in Chiang Mai? The city is a treasure trove of goods and souvenirs waiting to be brought back home. To explore the best of what Chiang Mai has to offer, take a stroll along its two famous walking streets.

First on the list is Tha Pae Walking Street, the largest and most renowned pedestrian street. It's a bustling marketplace with a vast selection of products, including handmade jewelry, clothing, souvenirs, bags, scarves, lamps, and delicious local snacks. This walking street spans from Tha Pae Gate to Ratchadamnoen Road, covering a distance of approximately 1 kilometer. However, it's only open on Sundays, starting from 6:00 PM until 10:00 PM.

Tha Pae Walking Street stands out for its emphasis on cultural diversity, with merchants often seen wearing traditional costumes. Besides the merchandise, there are various performances and shows for tourists to enjoy, creating a lively atmosphere filled with food, goods, and entertainment.

On Saturday evenings, head to the Walking Street at Wualai Road, which is equally captivating. Most vendors here are local residents from the Wualai area, making this street slightly smaller than Tha Pae but equally charming. Given Wualai's association with the Silver Village, you'll find an abundance of silverware and other local products for sale. Additionally, the street features a variety of authentic local goods.

While Chiang Mai boasts several other walking streets, these two – Tha Pae and Wualai – are guaranteed to provide you with an enjoyable shopping experience. So, make sure to explore and bring back some Chiang Mai treasures on your next visit!



Chiang Mai

Recommended Restaurants



MICHELIN BIB GOURMAND

- | | |
|-------------------------------------|-------------------------------|
| Magnolia Cafe' | Huen Muan Jai |
| Baan Landai | Maadae Slow Fish Kitchen |
| Aunt Aoy Kitchen | Go Neng (Wichayanon) |
| Dan Chicken Rice (San Sai) | Lung Khajohn Wat Ket |
| Rasik Local Kitchen | Tue Ka Ko Na Prince |
| Han Thueng Chiang Mai | Tune In Garden |
| Rote Yiam Beef Noodle (Seang Tawan) | Meena Rice Based Cuisine |
| Ekachan | Saiyud and Doctor Sai Kitchen |
| Sanae Thai Cuisine | Roti Pa Day |
| Na Chantra | Sanpakoi Kanomjeen |
| Kho Soi Mae Manee | Guay Jub Chang Moi Tat Mai |
| Huan Soontaree | Khao Soi Lung Parkit Kad Kom |
| Khao Soi Mae Sai | Krua Lawng Khao |
| Busarin Cuisine | |

Selected Restaurant

- | | |
|---|---------------------------|
| The Redbox | China Kitchen |
| Blackitch Artisan Kitchen | Cuisine de Garden |
| Aeeen | Kiti Panit |
| Baan Suan Mae Rim | Guay Tiew Pet Tun Saraphi |
| Wa-La-Dee | Aquila |
| Krua Phech Doi Ngam (Krua Mueang Classic) | Khao |
| The House by Ginger | Chum (Saraphi) |
| Lumdee Te Khuadang | Kinlum Kindee |
| Yangzi Jiang | Food For You |
| Talung | Raticha |
| Thana Ocha | Favola |

Chiang Rai

Northern Frontier of Siam

Chiang Rai, the northernmost province of Thailand, offers a captivating blend of natural beauty and cultural richness for travelers to immerse themselves in. Even within the city, one can experience the encompassing mountainous views that surround Chiang Rai. The town is adorned with numerous beautiful temples, both in the city center and its outskirts.

The topography, embraced by elongated mountain ranges, ensures a cool and pleasant climate throughout the year, especially during the winter season. Chiang Rai maintains pristine natural surroundings, blessed with lush forests and stunning winter blossoms.

Renowned as a hub of Buddhist art, Chiang Rai boasts unique masterpieces created by national artists that are seldom found elsewhere. The province offers an abundance of tourist destinations, catering to diverse preferences.

For those seeking to connect with nature, Doi Chang and Doi Phahee stand out as the hottest attractions. Currently, they are highly regarded for their premium coffee plantations, making Chiang Rai a prominent destination for high quality coffee in Thailand. Another iconic site is Doi Mae Salong, a renowned hill where a majority of the residents are Chinese descendants, settling there after the 93rd Division of the Chinese Army moved to Thailand. In addition to sipping tea, visitors can indulge in authentic, Chinese cuisine.

Chiang Rai's long-standing claim to fame is the Golden Triangle, renowned for its spectacular sea of mist. It is considered one of the top destinations in Thailand to witness this natural marvel. The unique feature of the mountain peaks pointing towards the sky, with cliffs extending towards the Laotian border, creates an unparalleled natural spectacle.

In essence, Chiang Rai remains a hidden gem, showcasing its beauty to the world with pride.

Chiang Rai

amazing
THAILAND



Golden Triangle

A Journey Across 3 Countries

The Golden Triangle, a name that resonates with familiarity, stands as the iconic tourist destination in the province of Chiang Rai, Northern Thailand. Located in the Chiang Saen district, it marks the confluence of three countries: Thailand (Chiang Rai province), the Lao People's Democratic Republic (Bokeo Province), and Myanmar (Shan State). Positioned at the meeting point, the majestic Mekong River flows through this triangular region.

Renowned as an economically significant area, the Golden Triangle offers breathtaking panoramic views, particularly during the tranquil misty mornings. Small boats at the waterfront serve as vessels for transporting goods to China and Laos, while tourists can embark on boat journeys to admire the scenic beauty of the Mekong River, especially enchanting during the sunrise when mist delicately veils the landscape.

The name “Golden Triangle” has two origins. First, it stems from the historical practice of using opium as a valuable commodity, akin to gold, in trade before the use of actual gold. Second, it reflects the region's significance in cross border trade, where gold served as a central medium for exchanging goods. In the past, the Golden Triangle was a major opium cultivation area globally.

Aside from the vibrant trade history, the area is a haven for local products, handicrafts, and various souvenirs. Visitors can also explore the Opium Museum, showcasing artifacts and tools related to opium cultivation, its history, and the impact on the region. This museum adds an intriguing layer to the overall Golden Triangle experience.

So, when in Chiang Rai, make your way to the northernmost point in Siam and explore the allure of the Golden Triangle.



Wat Rong Khun

A Thai Landmark Heritage

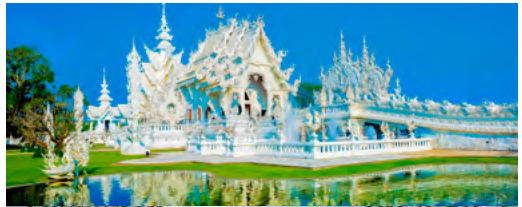
If there's one must visit destination in Chiang Rai, it undoubtedly is Wat Rong Khun. Originally a small, somewhat dilapidated temple in the local community, it underwent a transformative reconstruction led by the visionary artist, Professor Chalermchai Kositpipat, starting in the year 1997 (B.E. 2540). Driven by a deep love for his homeland, passion for art, and inspired by the profound artistic and compassionate qualities of King Rama IX, Professor Chalermchai aimed to create a monumental masterpiece for the nation.

Having had the privilege of presenting his artwork to King Rama IX, Professor Chalermchai felt a profound connection to Buddhist teachings, which subsequently transformed his life. This transformative experience motivated him to dedicate Wat Rong Khun as a symbol of Thai artistry for King Rama IX. The temple, often referred to as the White Temple due to its striking white color scheme, is a testament to the artist's devotion to Buddhism and his aspiration to share this spiritual journey with others.

Today, Wat Rong Khun stands as a breathtaking testament to architectural and artistic brilliance. Every corner is adorned with delicate and intricate details, with the most prominent feature being the gleaming white ubosot (ordination hall). The temple's interior showcases mural paintings, and an adjacent art exhibition building displays more of Professor Chalermchai's works for visitors to appreciate.

Wat Rong Khun has become a symbol of contemporary Thai art, a cultural heritage of immense significance. It is truly a national treasure that captures the essence of artistic expression, spirituality, and transformation.

Open daily 08.00 – 18.00 hrs.
Entrance fee: 100 Baht
For further details contact, Tel. 0 5367 3579





Apart from Wat Rong Khun being a significant landmark in Chiang Rai, there is another temple that will captivate everyone with the beauty of this region – Wat Rong Suea Ten.

A century ago, this area was known for its vibrant tiger population. The local villagers, living without proper homes and surrounded by tigers, used to witness these majestic creatures gracefully leaping across streams. This led to the area being named “Ban Rong Suea Ten” or the “Village of Dancing Tigers”



The establishment of Wat Rong Suea Ten began when the villagers found themselves without a local temple for religious ceremonies. Faced with the need to travel to other temples for religious events, they collectively decided to construct their own temple. This initiative aimed to become the spiritual center for the residents and host religious ceremonies.

Designed by Chiang Rai’s local artist, Phuttha Kabkaew, also known as Salan K, a disciple of Professor Chalermchai Kositpipat, the temple exhibits vibrant blue tones contrasting with gold to create a visually striking appearance. The celestial blue of the temple resembles the clear sky, infused with contemporary Buddhist artistry and the teachings of the Buddha.



Inside the temple, a priceless alabaster Buddha statue, the Phra Phuttha Chinnarat Tri Loke Na Thai, is enshrined. This revered statue is surrounded by 88,000 smaller Buddha images and various sacred artifacts hidden beneath. Additionally, the rear side of the temple showcases mural paintings depicting the life of the Buddha.

Visit Wat Rong Suea Ten, and you’ll discover the mesmerizing allure of this modern masterpiece that seamlessly blends artistry, culture, and spirituality.



Wat Rong Suea Ten Chiang Rai’s New Landmark

Open daily 07.00 – 17.00 hrs.
Entrance fee: 100 Baht
For further details contact, Tel. 06 4347 3636

Chiang Rai





About TAT Dubai Office

Established on the 10th February 2008, the Tourism Authority of Thailand (TAT) Dubai Office, a state enterprise under the Ministry of Tourism and Sports, is dedicated to cultivating robust partnerships, spearheading innovative marketing initiatives, and facilitating meaningful collaborations to promote Thailand as a premier travel destination to the Middle Eastern visitors.

Contact Information:

Address: 133 Sheikh Zayed Road
Apt 1804, Dusit Thani Dubai
Dubai, U.A.E.
Phone: +971 4 3250184-5
Email: tatdubai@tat.or.th
Website: www.tatdubai.com

