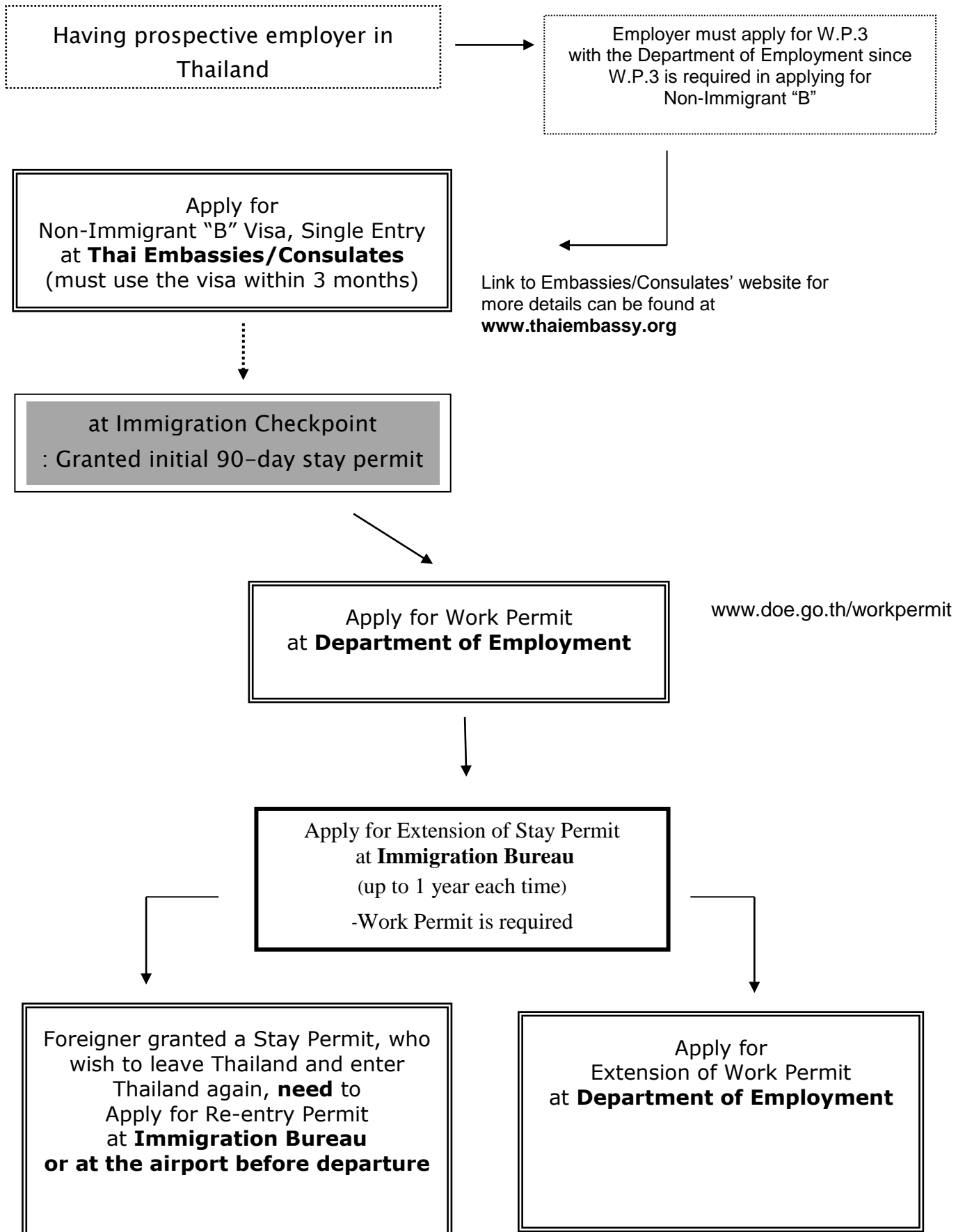
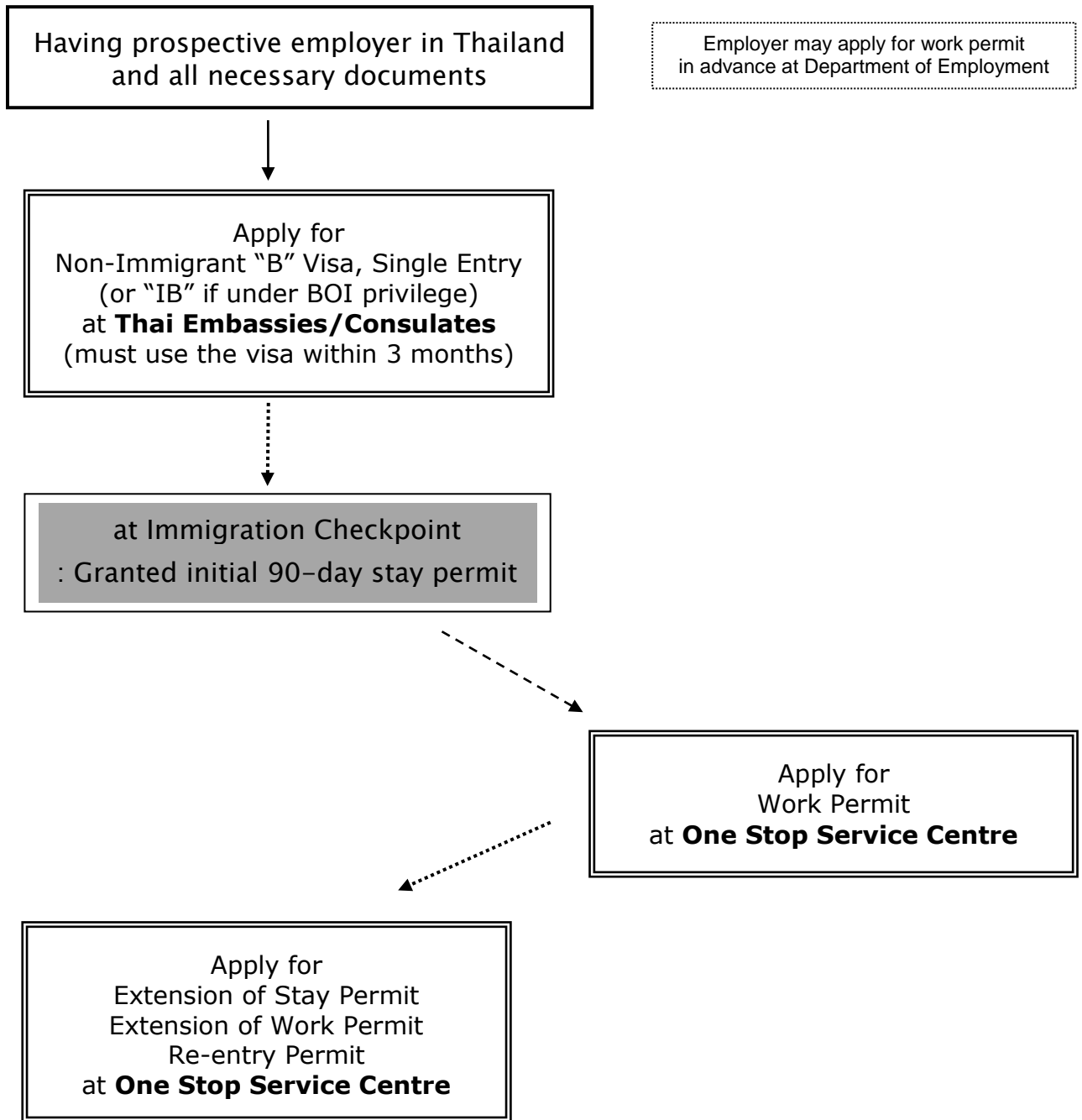


Standard Process for foreigners who wish to work in Thailand



**Exclusive service for eligible foreigners
at the One Stop Service Centre for Visa and Work Permit**



**Foreigners listed below are eligible to use services
at the One Stop Service Centre for Visa and Work Permit**

- Executives or experts obtaining privileges according to following laws;
 - Investment Promotion Act B.E. 2520 (1977)
 - Petroleum Act B.E. 2514 (1971)
 - Industrial Estate Authority of Thailand Act B.E. 2522 (1979)
- General Investors
 - at least 2 million baht
 - at least 10 million baht
- Executives or experts of an organization with fully paid up registered capital or total asset of not less than 30 million baht
- Registered Foreign Press
- Researchers or Developers on science and technology
- Officials of Branch Office of Overseas Bank
- Officials of Representative Office, or Regional Office of Transnational Corporation
- Experts on information technology
- Officials of Regional Operating Headquarters

**Conditions for Japanese businessmen to be eligible to use services
at the One Stop Service Centre for Visa and Work Permit
(enhancement by JTEPA from November 2007)**

1. Japanese intra-corporate transferees of a branch or affiliate importing foreign currencies into Thailand not less than 3 million baht
2. Natural persons of Japan who are employed under an employment contract by a public or private organisation registered and engaged in substantive business operations in Thailand with fully paid up registered capital not less than 2 million baht
3. Japanese investors having at least fully paid up capital of 2 million baht

: Japanese business persons are top clients at the One Stop Services Centre in term of number of applications (even without JTEPA)

One Stop Service for Visa and Work Permit Centre
Chamchuree Square Building, 18th floor
Payathai Road, Bangkok
0-2209-1100-1016