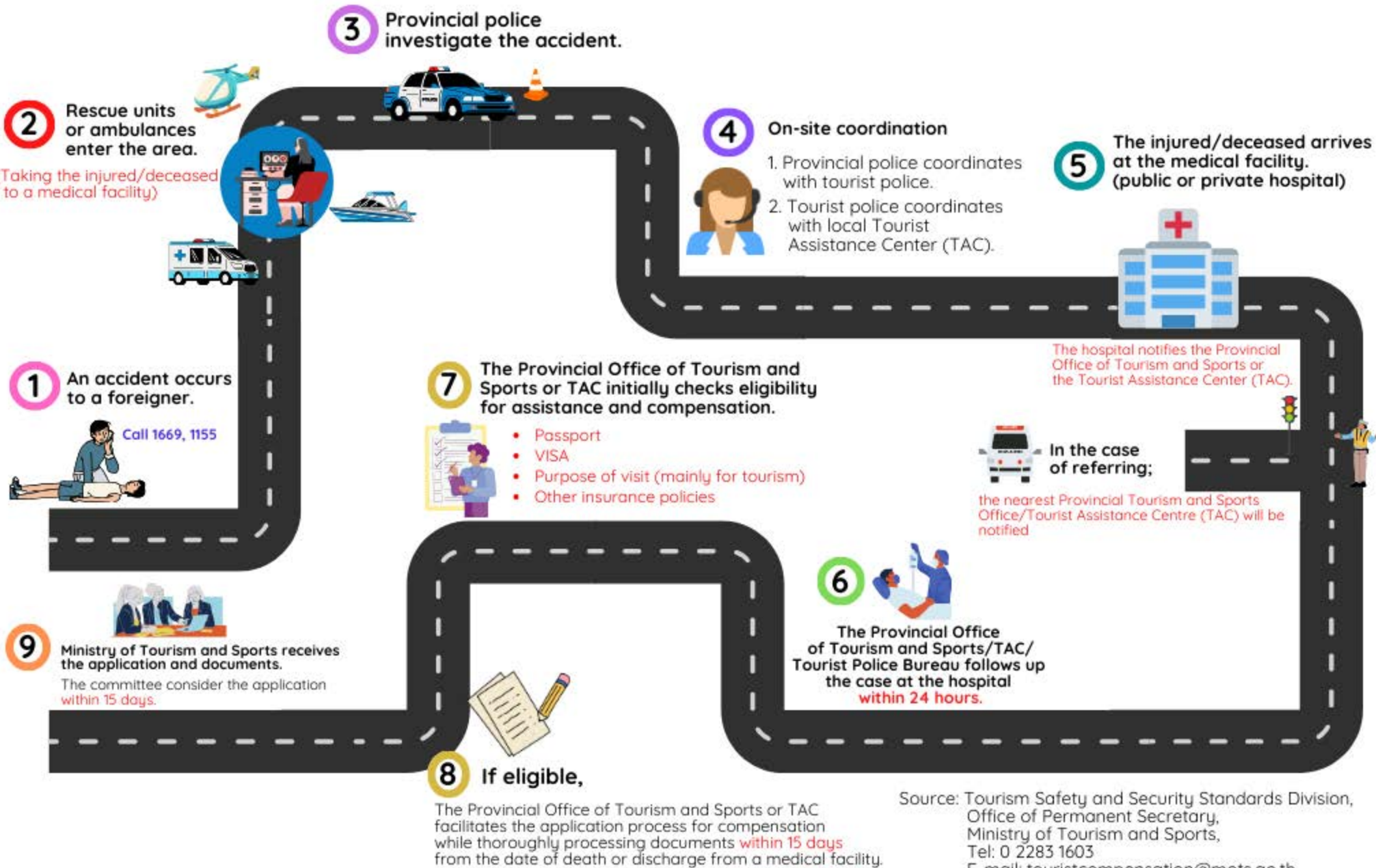




Assistance Scheme for Foreign Tourist Injury and Casualty

(Foreign Tourist Assistance Guidelines)



Source: Tourism Safety and Security Standards Division,
Office of Permanent Secretary,
Ministry of Tourism and Sports,
Tel: 0 2283 1603
E-mail: touristcompensation@mots.go.th



Assistance Scheme for Foreign Tourist Injury and Casualty

Ministry of Tourism and Sports

+ Compensation Criteria

- 1. Foreign tourists who have experienced accidents or losses in Thailand
- 2. The accidents or losses must occur between 1st January and 31st August 2024.
- 3. Foreign tourists must hold valid passports with a tourist visa, except in the case where a visa is not required for certain types of tourists in special cases.
- 4. The visa must not be for the purpose of pursuing a career or earning income, and the behavior of the tourist must demonstrate that they did not come here mainly for tourism.

+ Incidents that are entitled to compensation

In cases where loss or damage occurs that is not caused by the tourist's negligence, intent, illegal act, or involvement in an offense, conspiracy, or behavior that risks causing the incident, including incidents under the responsibility of the private sector.

(1)



Offenses against body and life

(2)



Accident

(3)



Bodily harm or death caused by theft

(4)



Rape

(5)



Public endangerment

(6)



Other incidents following the boards' resolution

+ Details of compensation payments to foreign tourists

(1)



Death

not exceeding**

1,000,000 THB/person

(2)



Loss of limbs, organs

300,000 THB/person

(3)



Permanent eyesight loss

300,000 THB/person

(4)



Total permanent disability

300,000 THB/person

(5)



Medical expenses

not exceeding**

500,000 THB/ person

** Section (1) and (5); In cases where foreign tourists are covered by other insurance policies, disbursements from such insurance policies must be made. They have the right to request financial assistance for the difference in money received under their insurance policy; however, requests for financial aid must not exceed the specified rate.

+ Please submit required documents

- 1. In case of death** (submit documents within 15 days from the date of death.)
 1. Copy of the deceased's passport
 2. Copy of death certificate
 3. Copy of autopsy report or death certificate
 4. Copy of police officer's daily report
 5. Copy of document specifying the legal heir of the deceased (certified by the embassy)
 6. Letter of Authorization (in the case of authorization)
- 2. In the case of loss of limbs, organs, eyesight, or permanent total disability** (submit documents within 15 days from the date of medical diagnosis.)
 1. Copy of the tourist's passport
 2. Copy of doctor's report confirming the loss of limbs, organs, sight, or complete and permanent disability.
 3. Copy of police officer's daily report
 4. Letter of Authorization (in the case of authorization)
- 3. In the case of medical treatment** (submit documents within 15 days from the date of discharge from the medical facility.)
 1. Copy of the tourist's passport
 2. Copy of doctor's report indicating key symptoms, diagnosis and treatment results
 3. Copy of receipt or invoice detailing expenses
 4. Copy of police officer's daily report
 5. Letter of Authorization (in the case of authorization)

+ Submitting required documents to :

- 1. Ministry of Tourism and Sports**
Tourism Safety and Security Standards Division
(Monday - Friday, 08.30 - 16.30 hrs.)
- 2. Provincial Office of Tourism and Sports (76 Provinces)**
(Monday - Friday, 08.30 - 16.30 hrs.)
- 3. Tourist Assistance Centre at Suvarnabhumi International Airport and Don Mueang International Airport**
(open 24 hours every day)
- 4. E-mail**
touristcompensation@mots.go.th
- 5. Postal Address**
Ministry of Tourism and Sports
Tourism Safety and Security Standards Division
4 Ratchadamnoen Nok Avenue, Wat Somanas,
Pomparbsatrupai, Bangkok 10100
Telephone : +662 283 1603 and +662 2831604

Ministry of Tourism and Sports
Tourism Safety and Security Standards Division

4 Ratchadamnoen Nok Avenue, Wat Somanas, Pomparbsatrupai, Bangkok 10100

+662 283 1603 www.mots.go.th

touristcompensation@mots.go.th



More information / Request Form



<https://shorturl.at/blpqv>